

COMPANY: DEER LAKE OIL & GAS INC.

WELL: DEER LAKE OIL & GAS FIELD

FIELD: WESTERN ADVENTURE NORTH

PROVINCE: NEWFOUNDLAND

PROVINCE: NEWFOUNDLAND

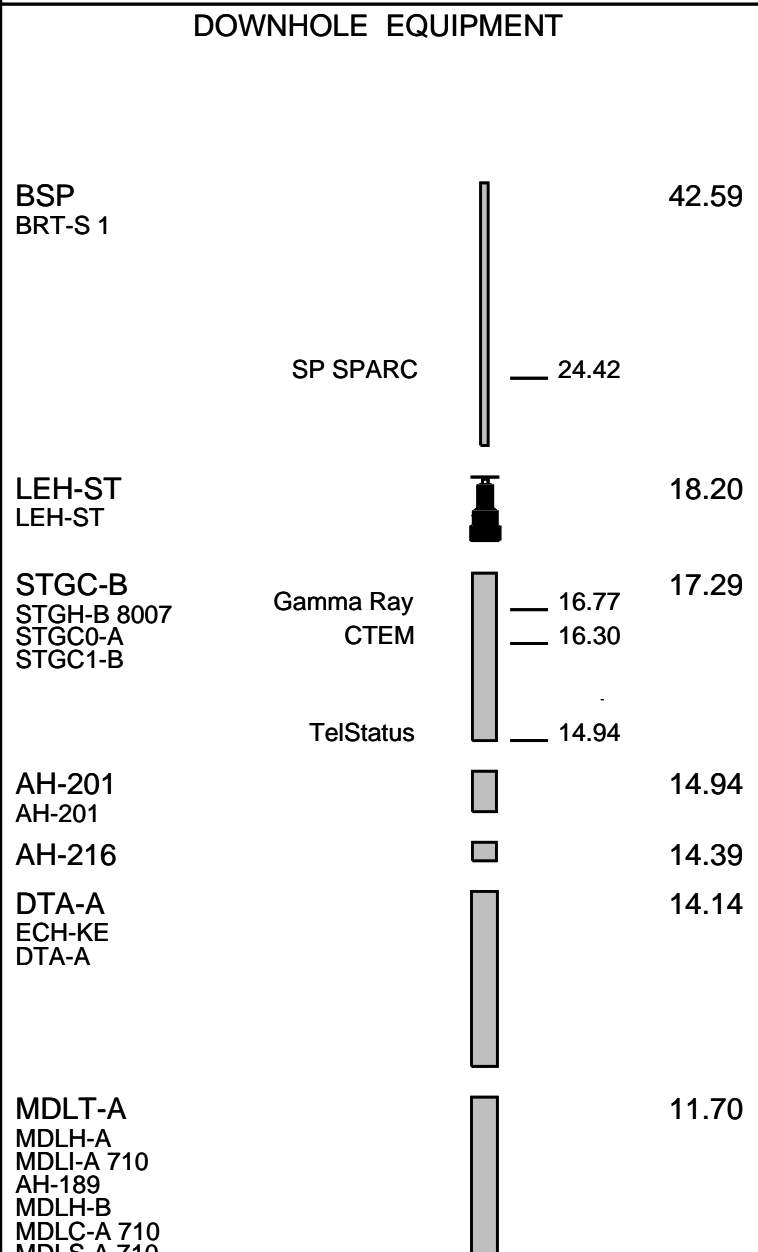
PROVINCE: NEWFOUNDLAND		NORTHING: 5,456,519		Elev
Field: EXPLORATORY		EASTING: 482,797		
Location: NORTHING: 5,456,519				
Well: DEER LAKE OIL & GAS ET AL				
Company: DEER LAKE OIL & GAS INC.				
Schlumberger		DUAL LATER		
LOCATION		Permanent Datum: GROUND LEVEL		Elev
Log Measured From: DRILL FLOOR		2.5		
Drilling Measured From: DRILL FLOOR				
API Serial No. 2000-120-01-01		NOB 5,4		
Logging Date 17-JAN-2001				
Run Number TWO				
Depth Driller 1584 m				
Schlumberger Depth 1575 m				
Bottom Log Interval 1571 m				
Top Log Interval 873 m				
Casing Driller Size @ Depth 89,000 mm @ 872 m				
Casing Schlumberger 873 m				
Bit Size 75,770 mm				
Type Fluid In Hole POLYMER - KCL				
Density 1068 kg/m3		34 s		
Fluid Loss PH				
MUD Source Of Sample MEASURED				
RM @ Measured Temperature 0.162 ohm.m @ 5 degC				
RMF @ Measured Temperature @				
RMC @ Measured Temperature @				
Source RMF RMC				
RM @ MRT 0.066 @ 44		NO SAMPLE @ 44		
Maximum Recorded Temperatures 44 degC 44				
Circulation Stopped 16-JAN-2001 10:00				
Logger On Bottom 18-JAN-2001 16:55				
Unit Number 19 Location DARTMOUTH				
Recorded By KELLI SASCO				
Witnessed By STAN PODULSKY				

1ST DESCENT: CABLE RUN (GR, TELEMETRY)					
2ND DESCENT: LITHO DENSITY, GR					
3RD DESCENT: BHC SONIC					
4TH DESCENT: DUAL LATEROLOG					
ALL TOOLS RUN SLICK					
RIG: LONGYEAR SUPER 50					
CREW 19: MIKE DIGGDON, STEVE BEATON					
RUN 1			RUN 2		
SERVICE ORDER #:		6418567	SERVICE ORDER #:		
PROGRAM VERSION:		9C0-413	PROGRAM VERSION:		
FLUID LEVEL:			FLUID LEVEL:		
LOGGED INTERVAL	START	STOP	LOGGED INTERVAL	START	STOP

EQUIPMENT DESCRIPTION					
RUN 1			RUN 2		

SURFACE EQUIPMENT

LCM-AA 974
WITM (DTS)-A



MDLS-A 710
MDLE 710

LLD LLS

4.56

BNS-CCS

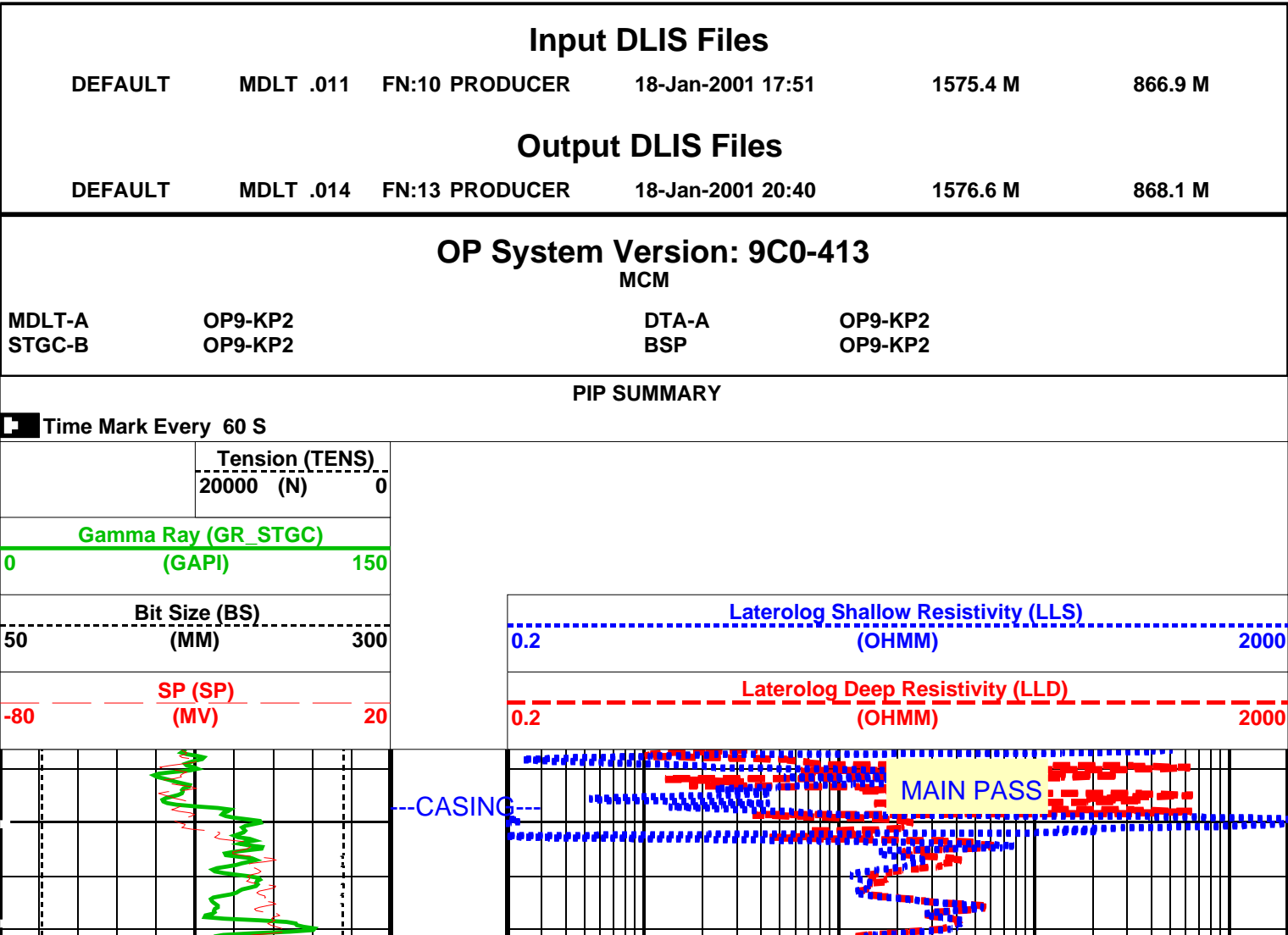
HV DF
Tension ACCZ

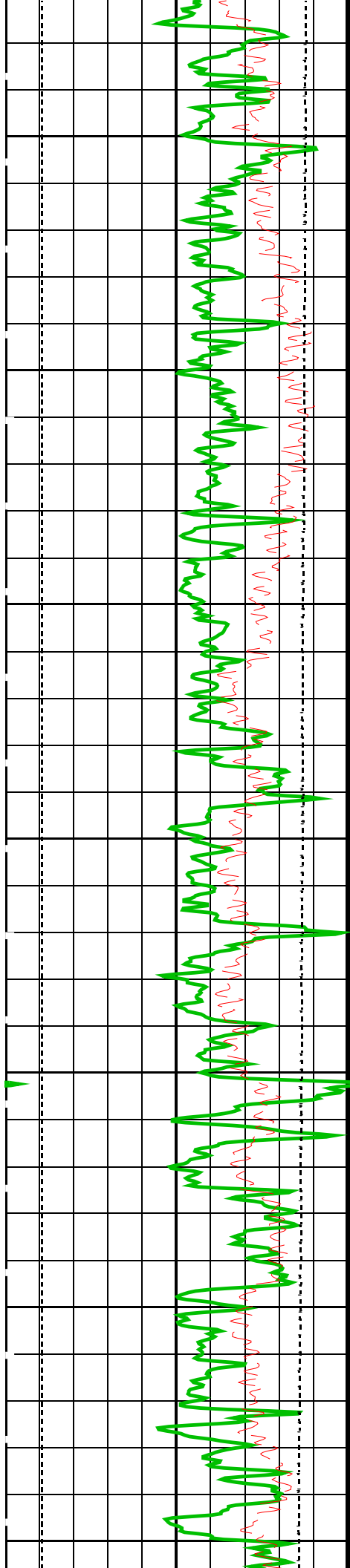
TOOL ZERO

0.00

0.14

MAXIMUM STRING DIAMETER 70 MM
MEASUREMENTS RELATIVE TO TOOL ZERO
ALL LENGTHS IN METERS



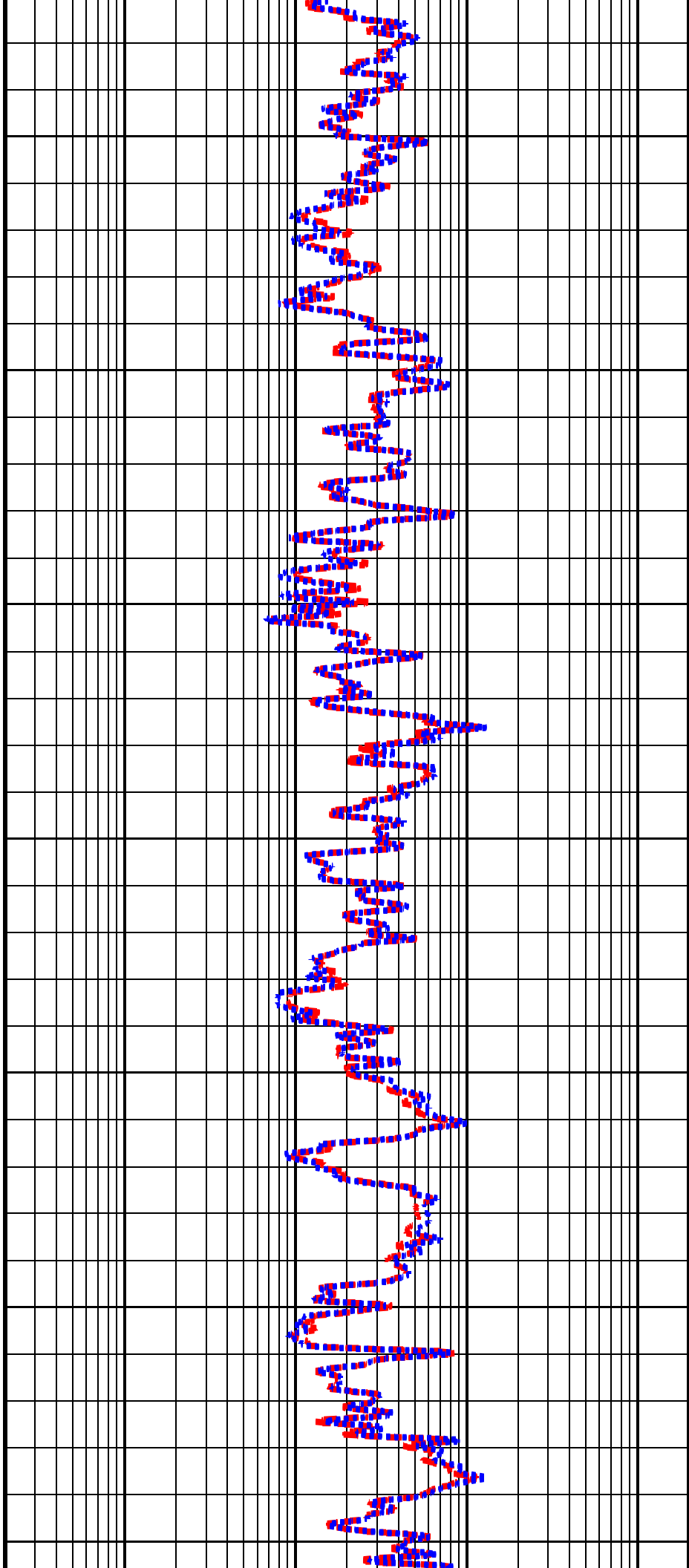


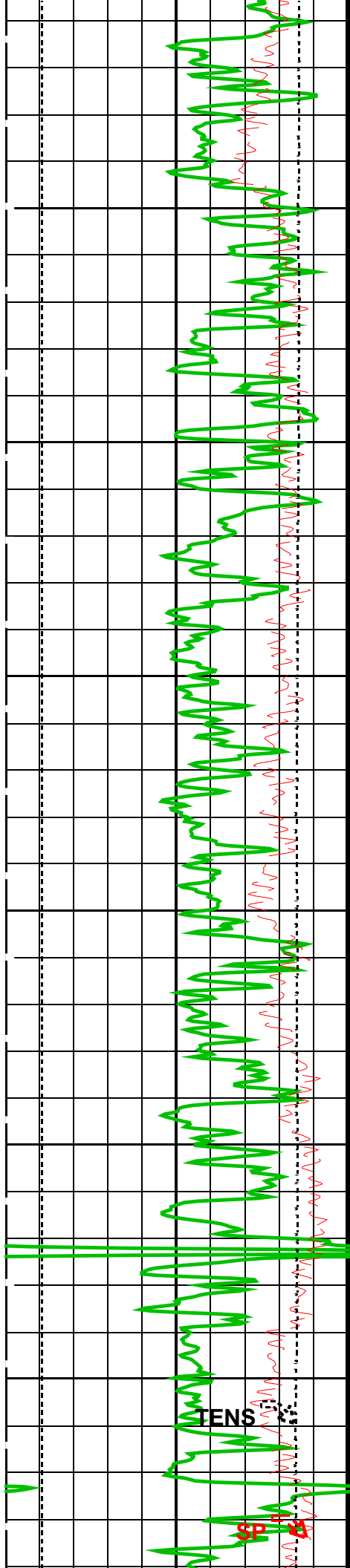
900

950

1000

1050

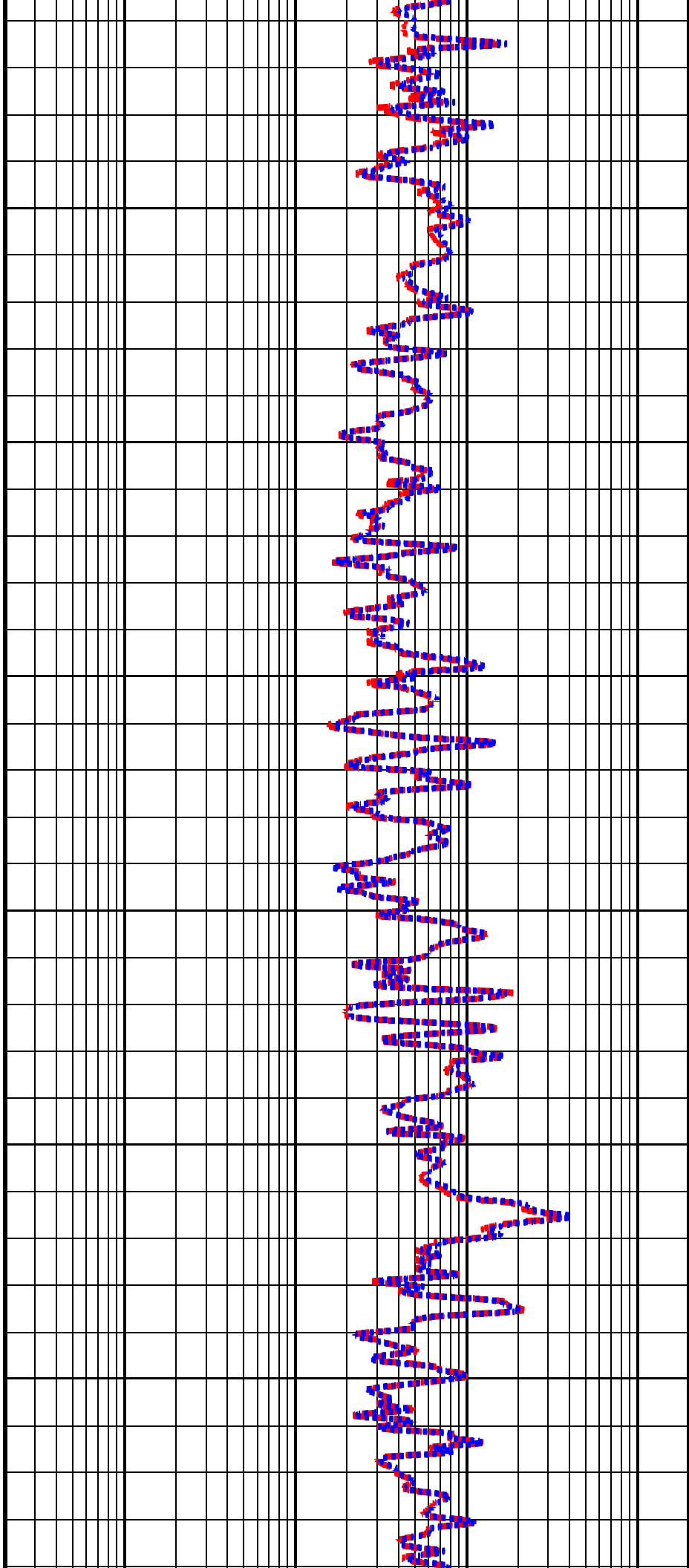


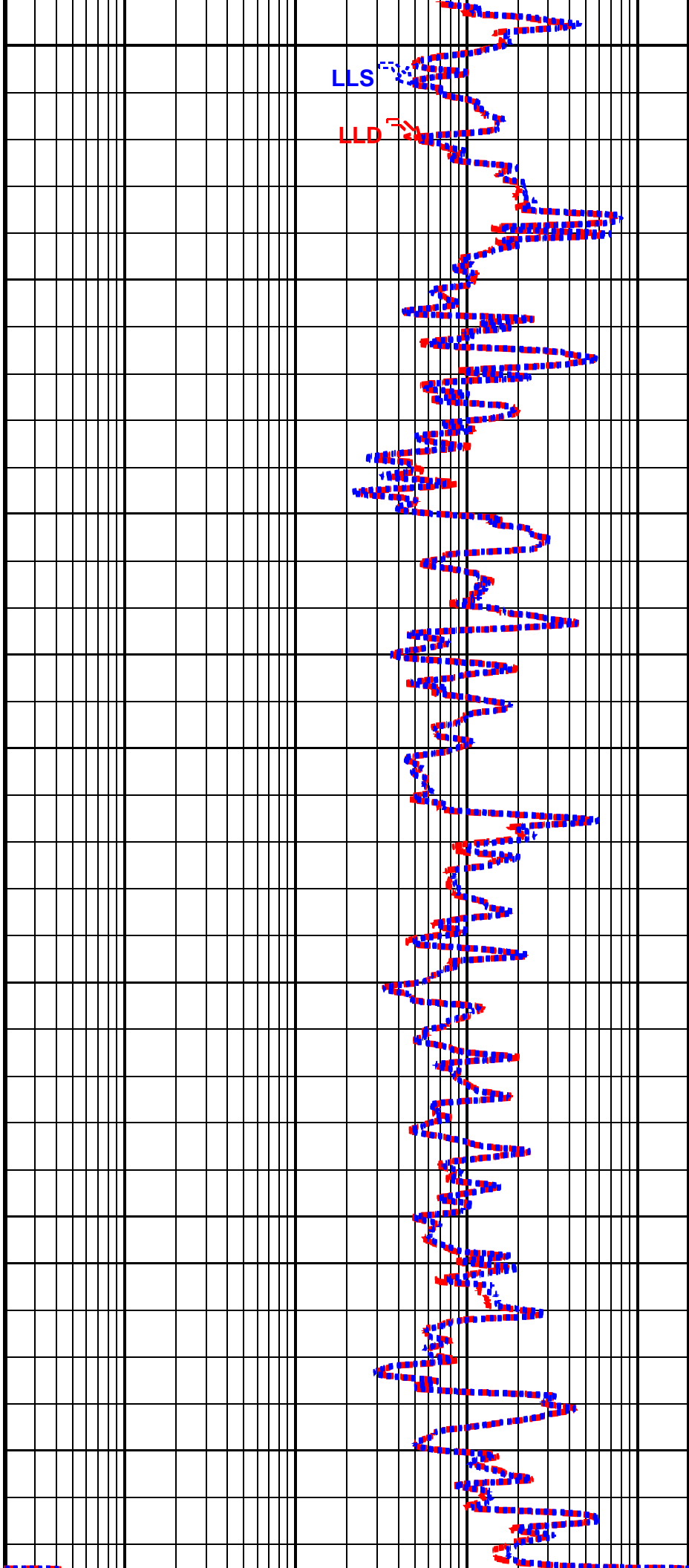
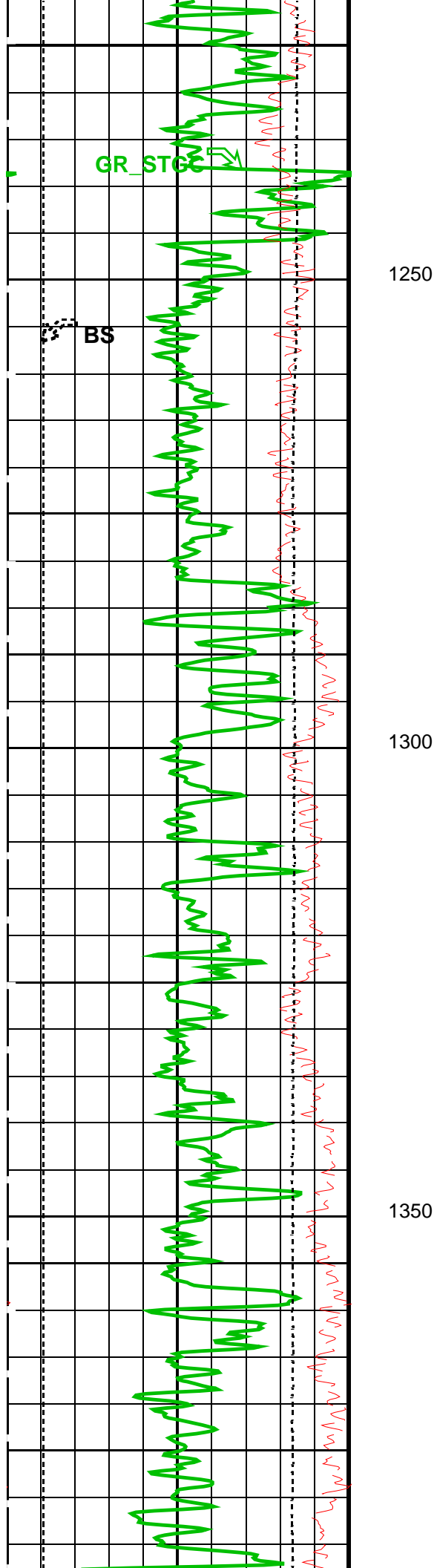


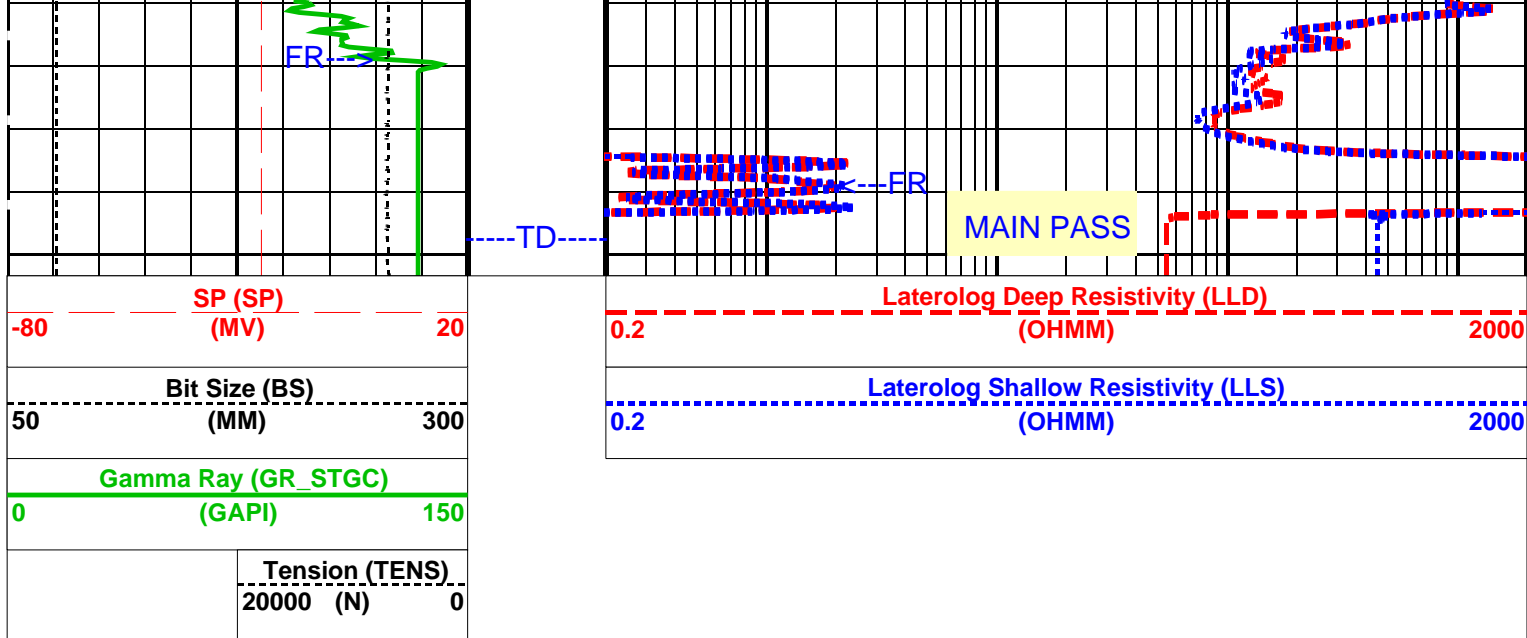
1100

1150

1200







PIP SUMMARY

Time Mark Every 60 S

Parameters

DLIS Name	Description	Value
BS	Bit Size	75.770 MM
DO	Depth Offset	1.2 M
DORL	Depth Offset Repeat Analysis	1.2 M
DPRF	DEEP REFERENCE POWER	550 NW
KFAC	K FACTOR	SOND
LLOO	LATEROLOG LOOP	OFF
PLRM	POWER LOOP REFERENCE MODE	DEEP
PP	Playback Processing	NORMAL
SPNV	SP Next Value	-25 MV
SPRF	SHALLOW REFERENCE POWER	550 NW

Format: DLT_S2 Vertical Scale: 1:600

Graphics File Created: 18-Jan-2001 20:40

OP System Version: 9C0-413

MCM

MDLT-A	OP9-KP2	DTA-A	OP9-KP2
STGC-B	OP9-KP2	BSP	OP9-KP2

Input DLIS Files

DEFAULT	MDLT .011	FN:10 PRODUCER	18-Jan-2001 17:51	1575.4 M	866.9 M
---------	-----------	----------------	-------------------	----------	---------

Output DLIS Files

DEFAULT	MDLT .014	FN:13 PRODUCER	18-Jan-2001 20:40
---------	-----------	----------------	-------------------

Input DLIS Files

DEFAULT	MDLT .011	FN:10 PRODUCER	18-Jan-2001 17:51	1575.4 M	866.9 M
---------	-----------	----------------	-------------------	----------	---------

Output DLIS Files

DEFAULT	MDLT .014	FN:13 PRODUCER	18-Jan-2001 20:40	1576.6 M	868.1 M
---------	-----------	----------------	-------------------	----------	---------

OP System Version: 9C0-413

MCM

MDLT-A	OP9-KP2	DTA-A	OP9-KP2
STGC-B	OP9-KP2	BSP	OP9-KP2

PIP SUMMARY

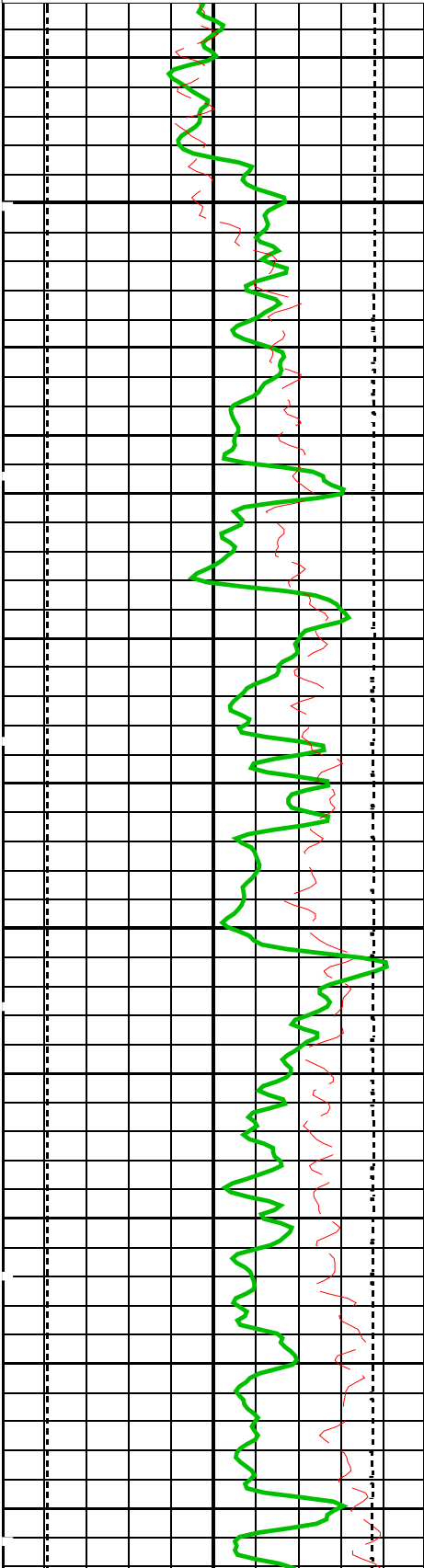
Time Mark Every 60 S

Tension (TENS)
20000 (N) 0

Gamma Ray (GR_STGC)
0 (GAPI) 150

Bit Size (BS)
50 (MM) 300

SP (SP)
-80 (MV) 20



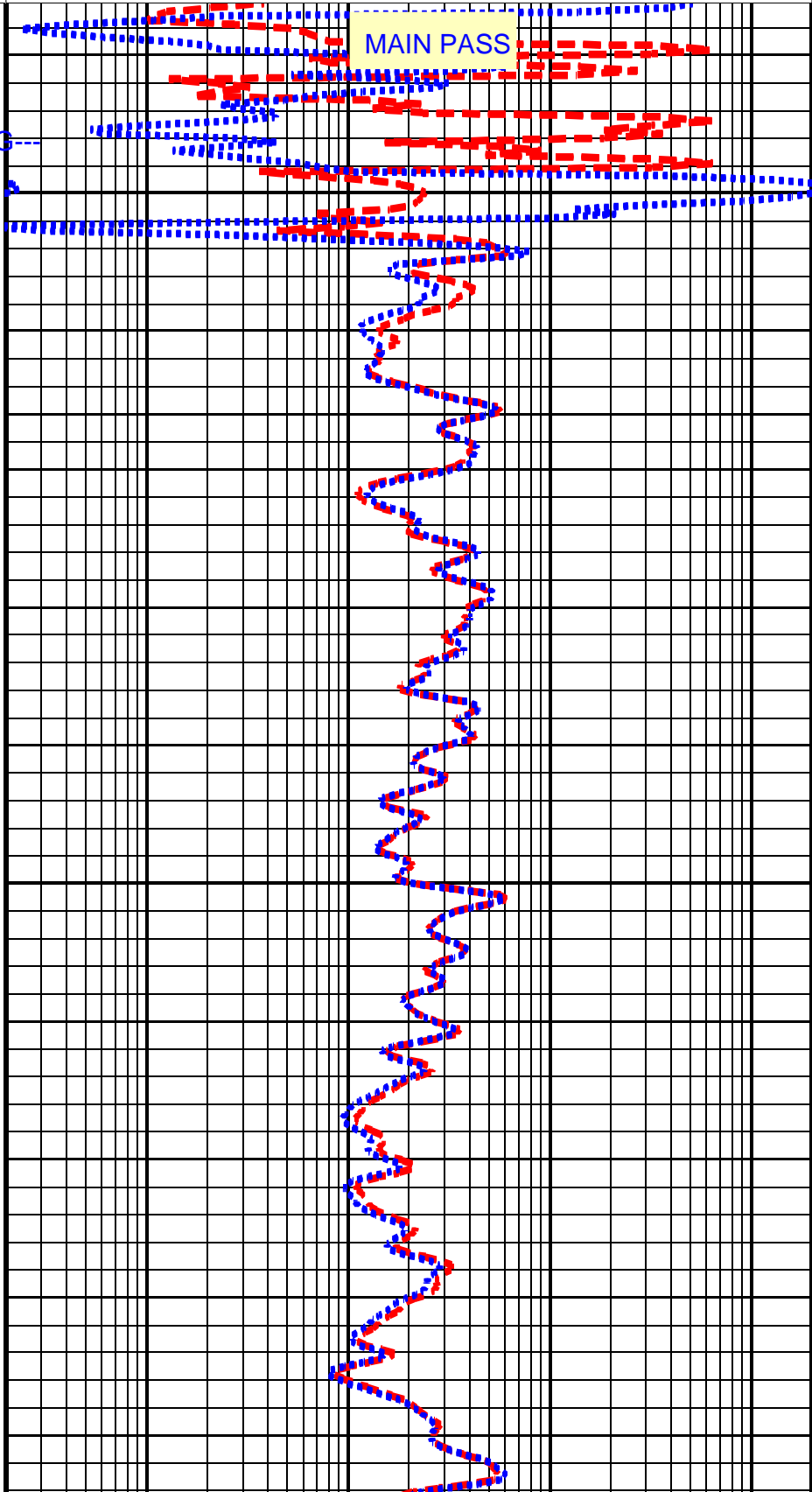
---CASING---

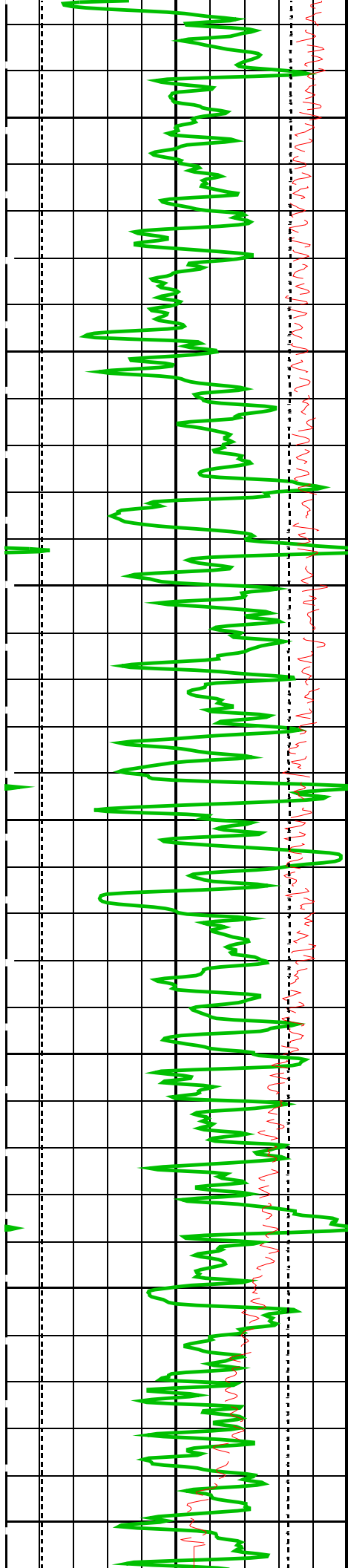
875

900

Laterolog Shallow Resistivity (LLS)
0.2 (OHMM) 2000

Laterolog Deep Resistivity (LLD)
0.2 (OHMM) 2000



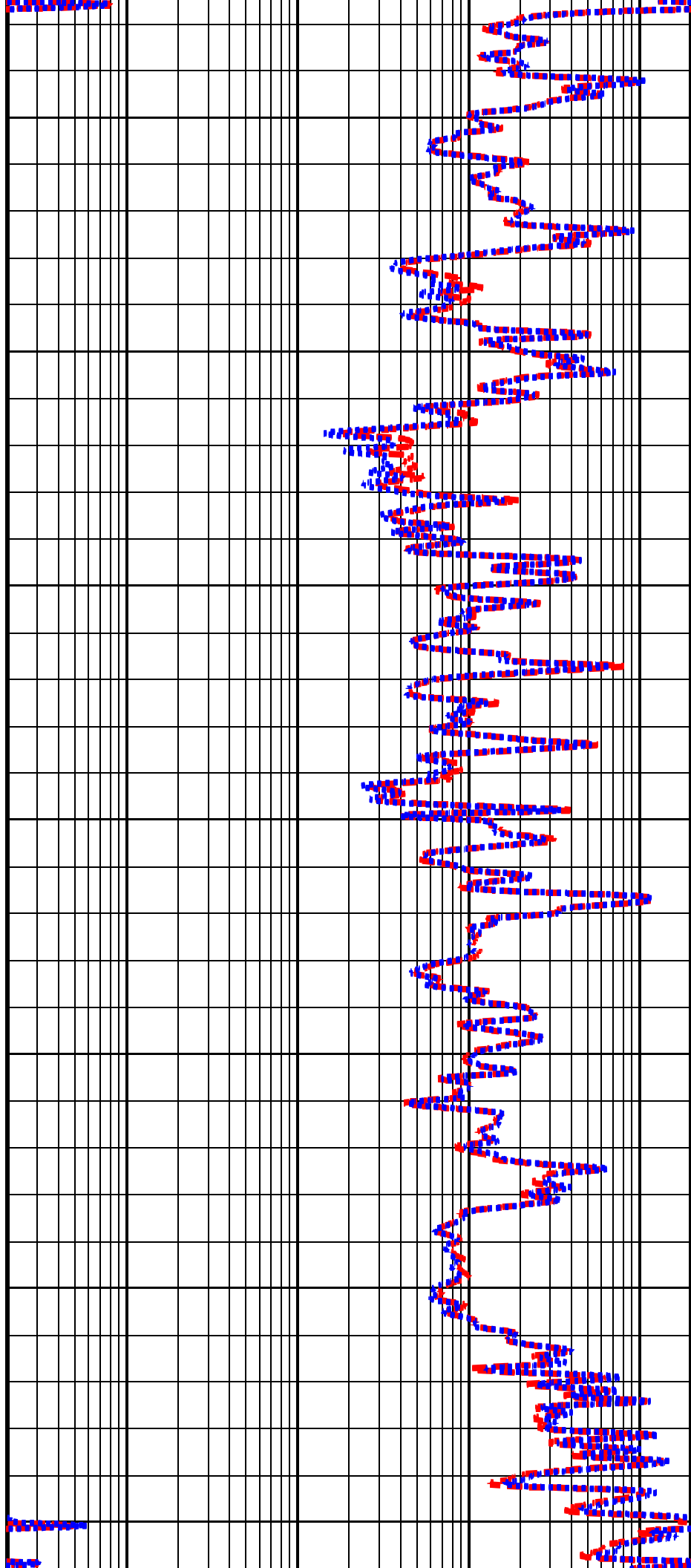


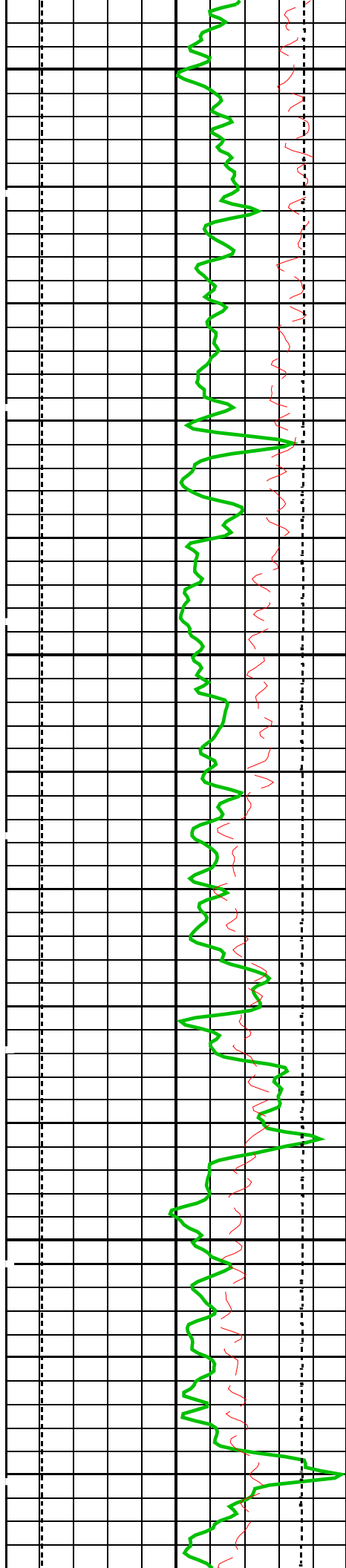
1400

1450

1500

1550

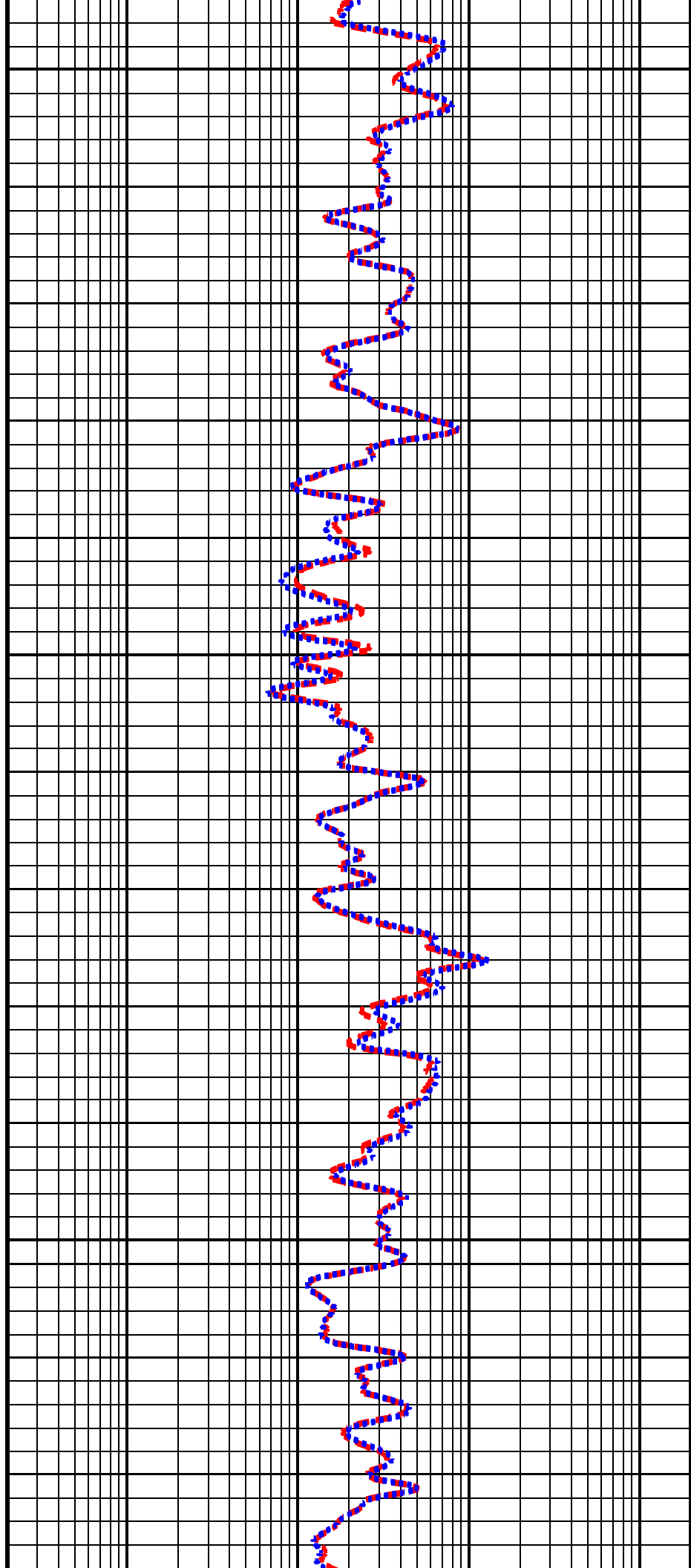


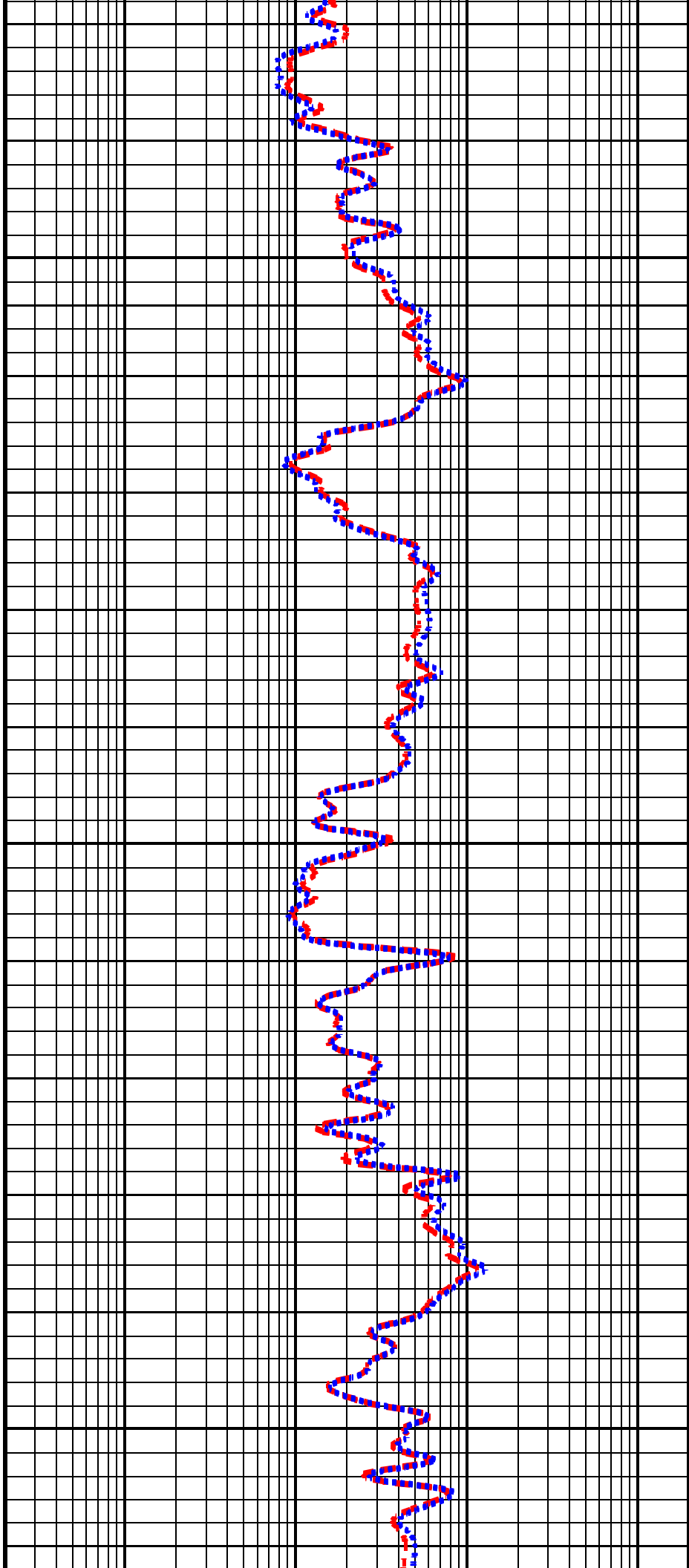
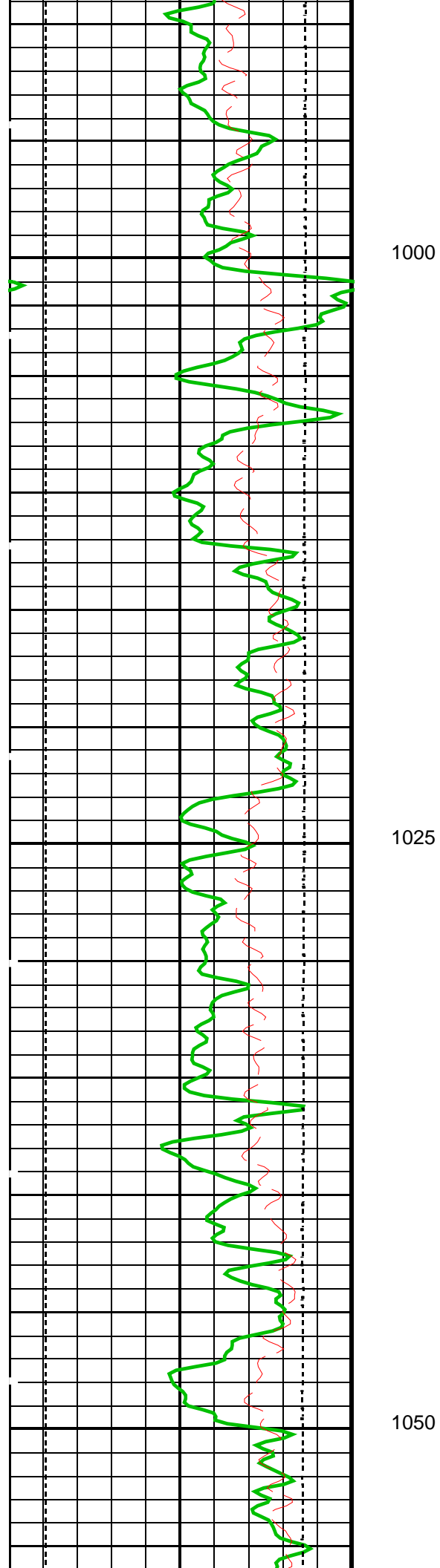


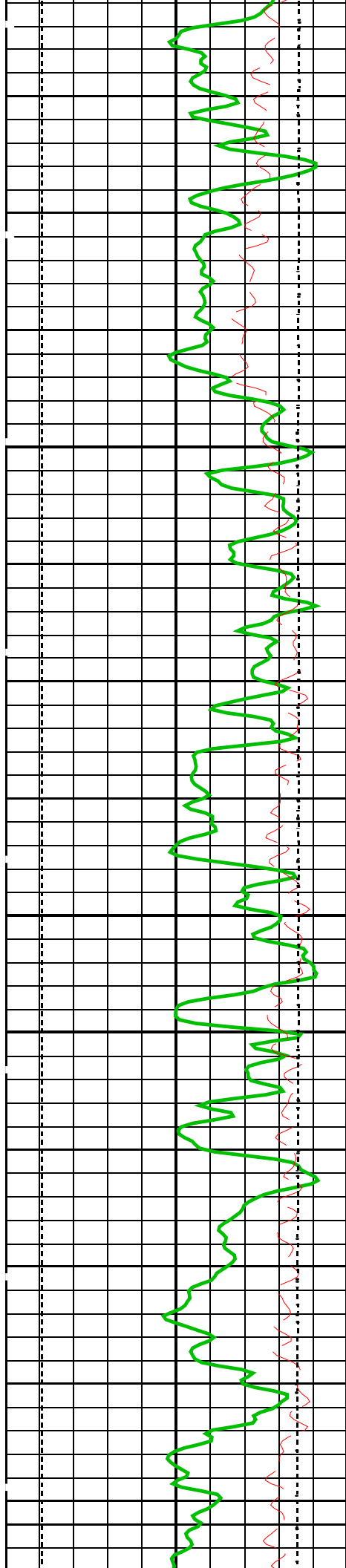
925

950

975

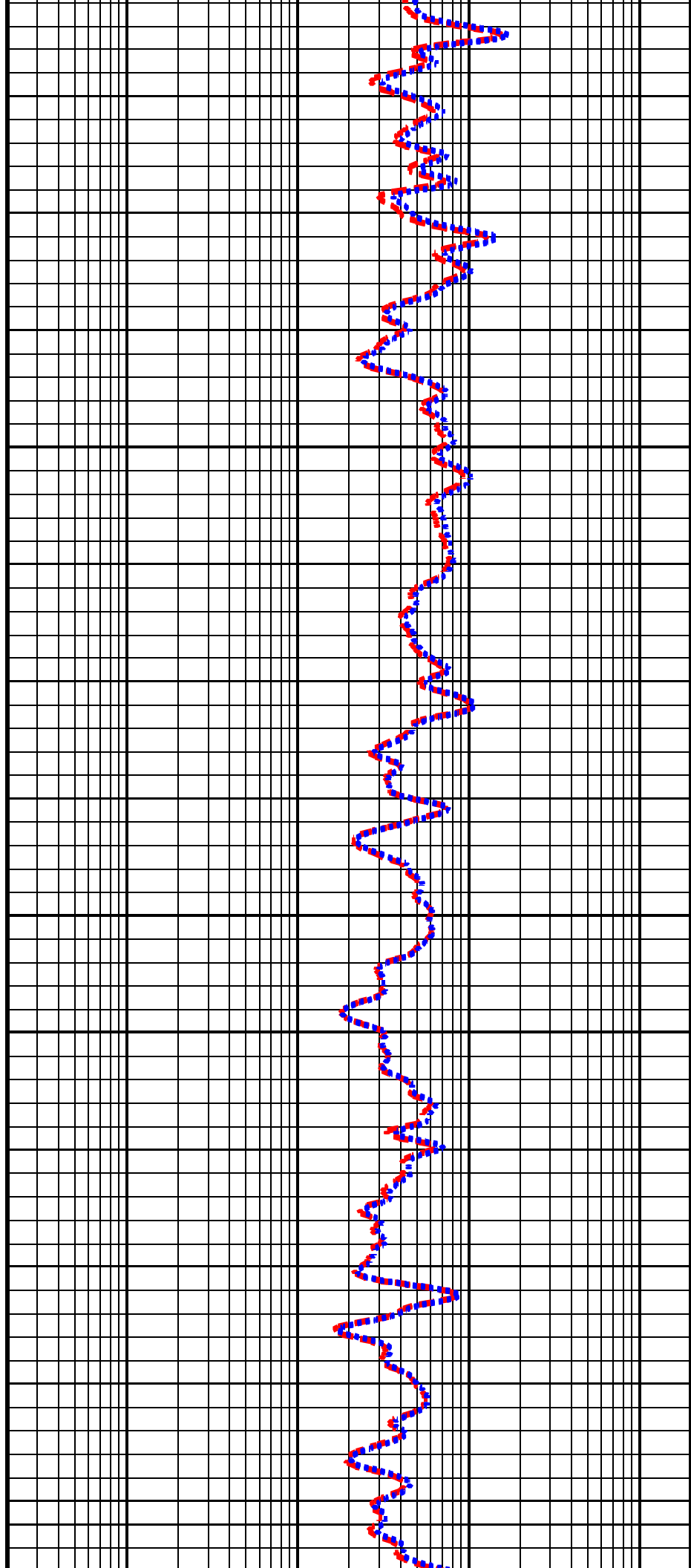


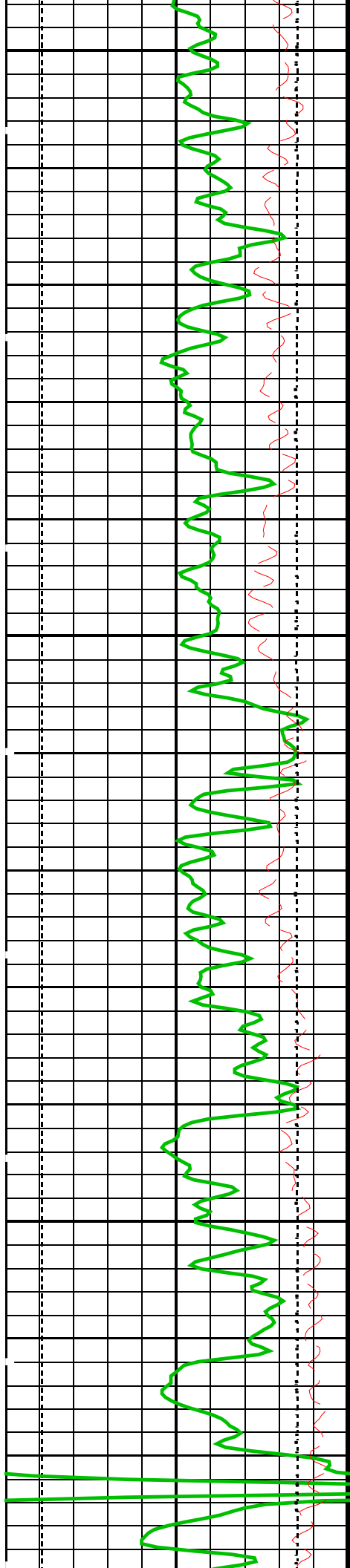




1075

1100

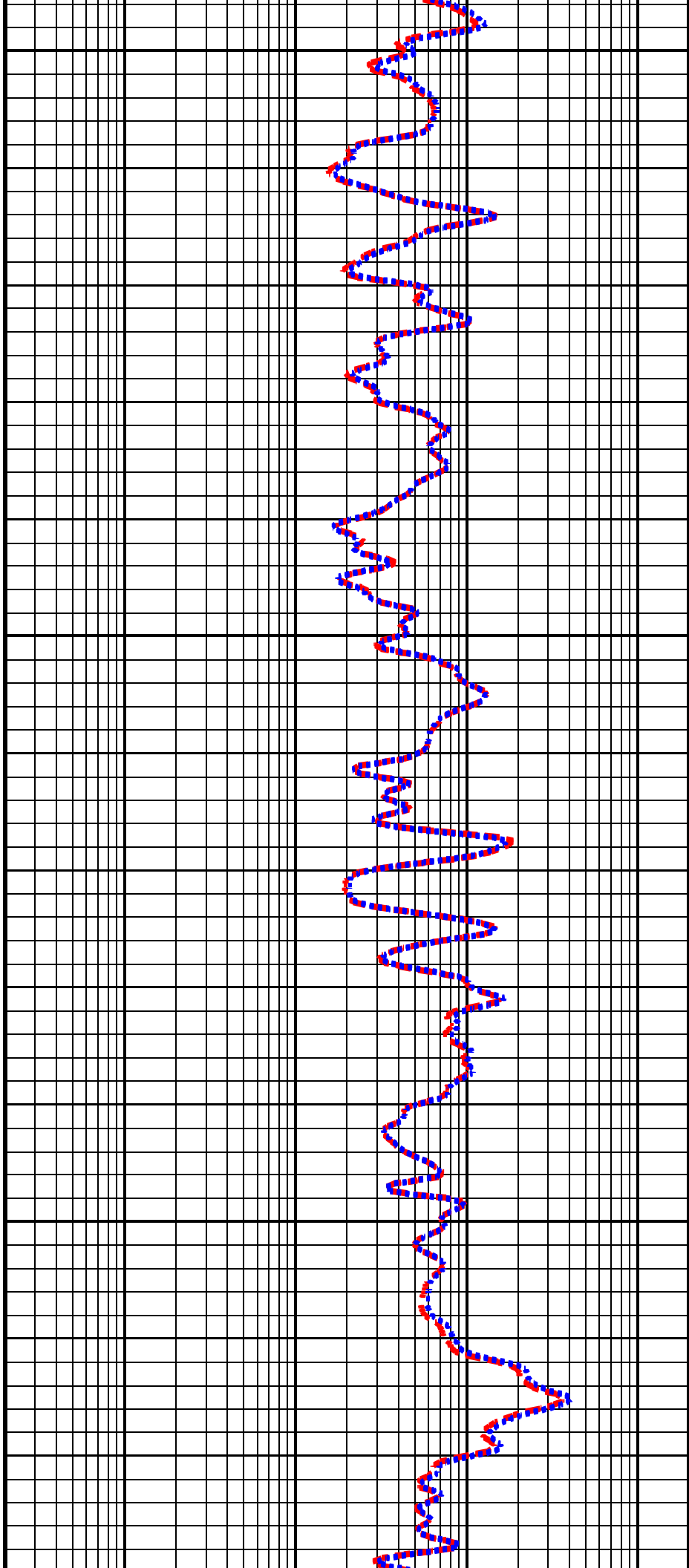


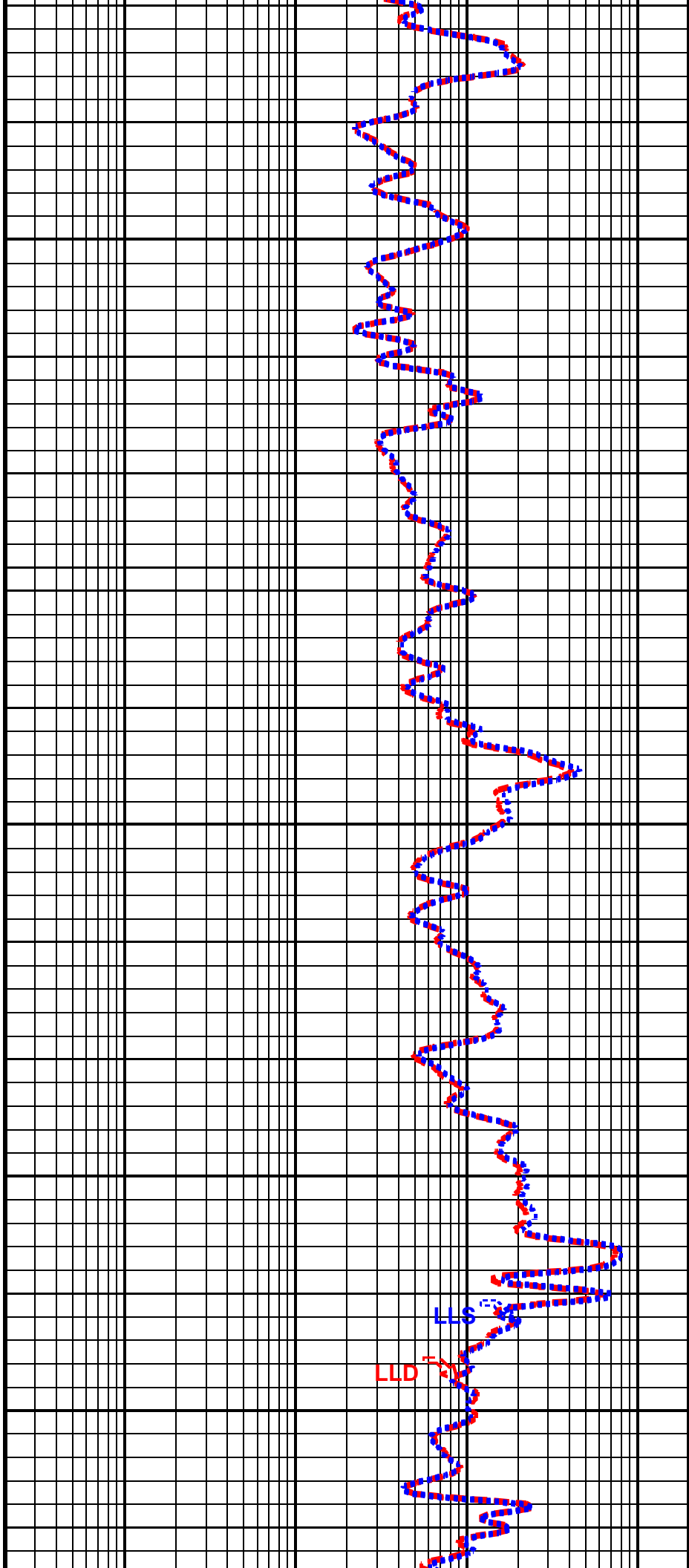
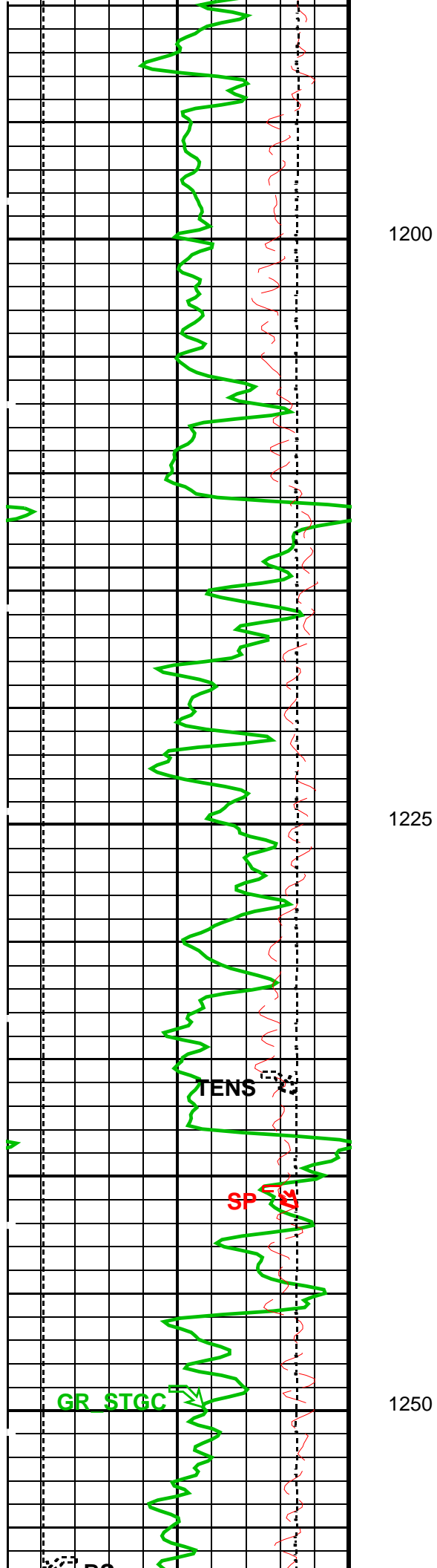


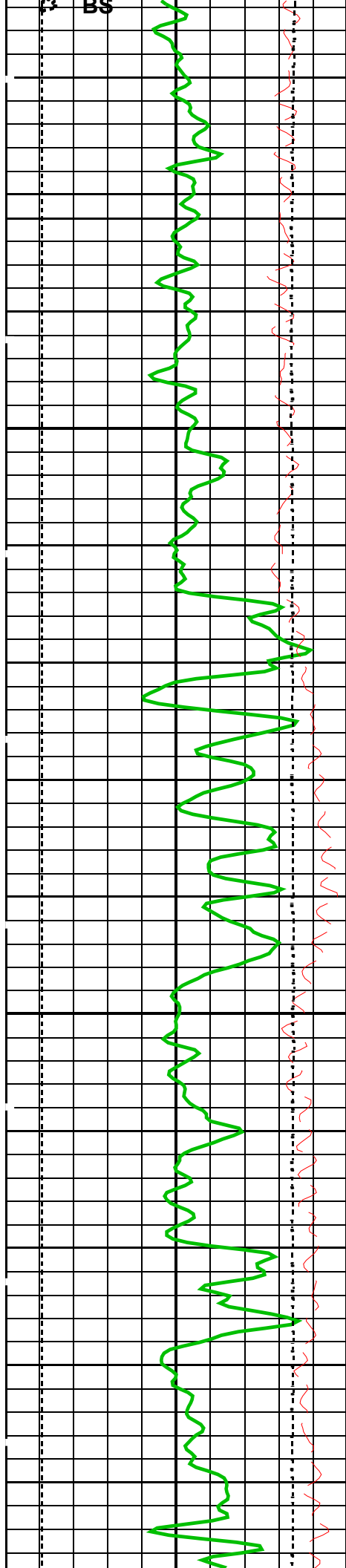
1125

1150

1175

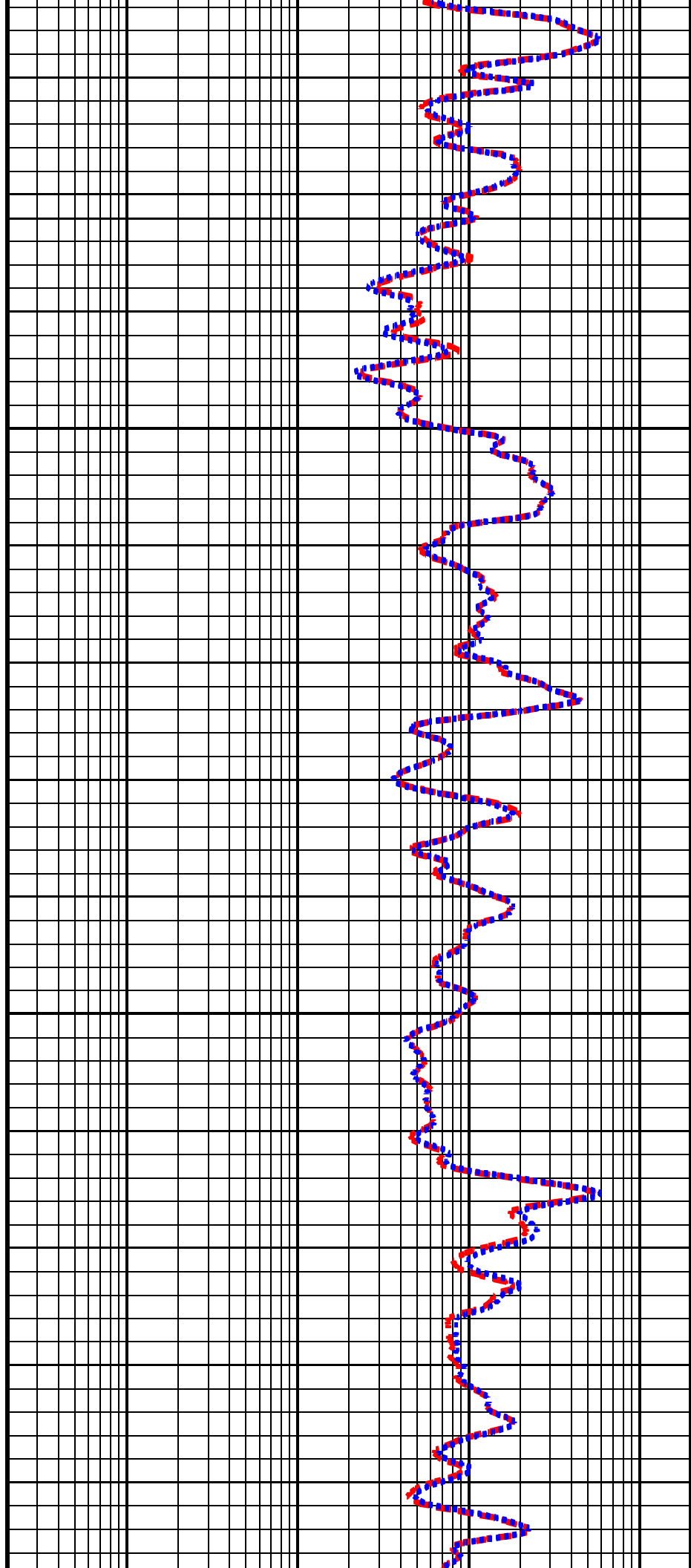


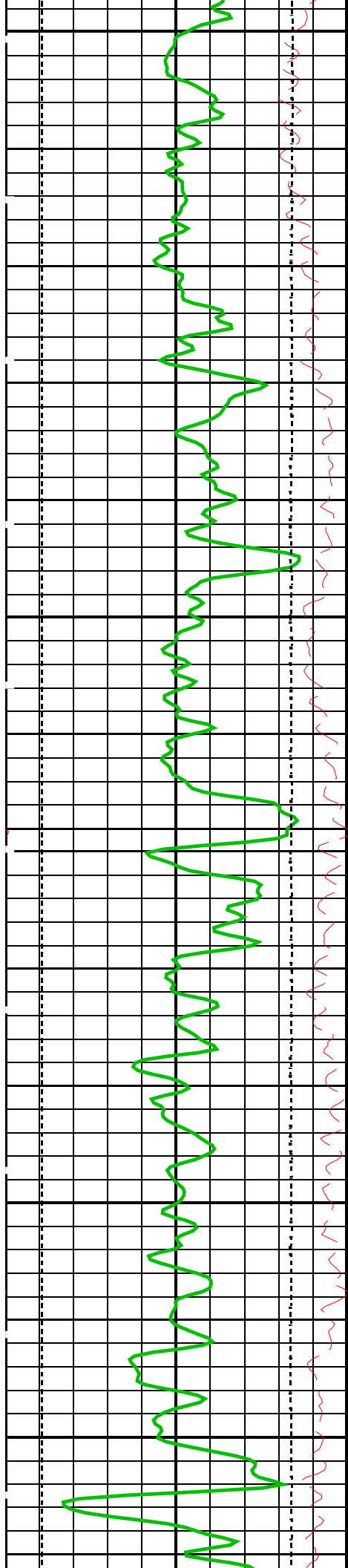




1275

1300

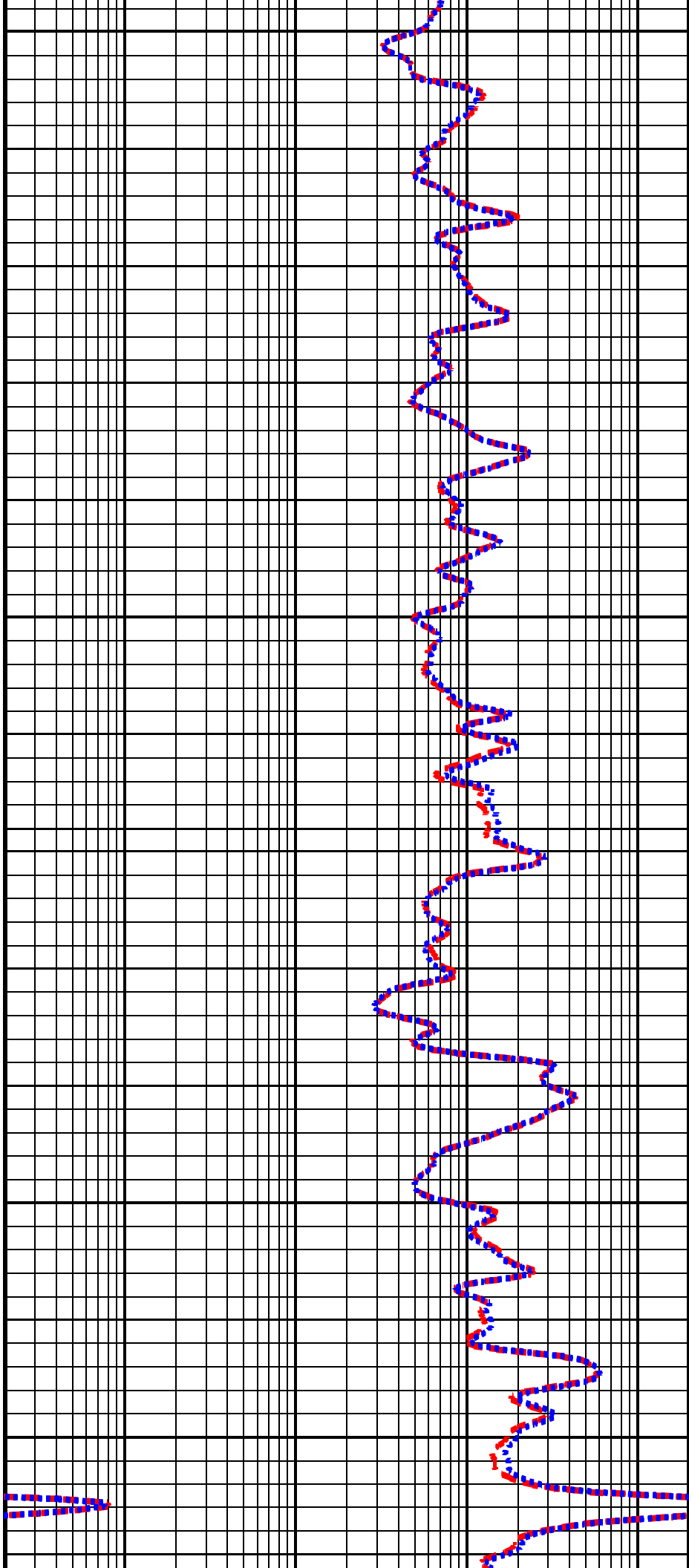


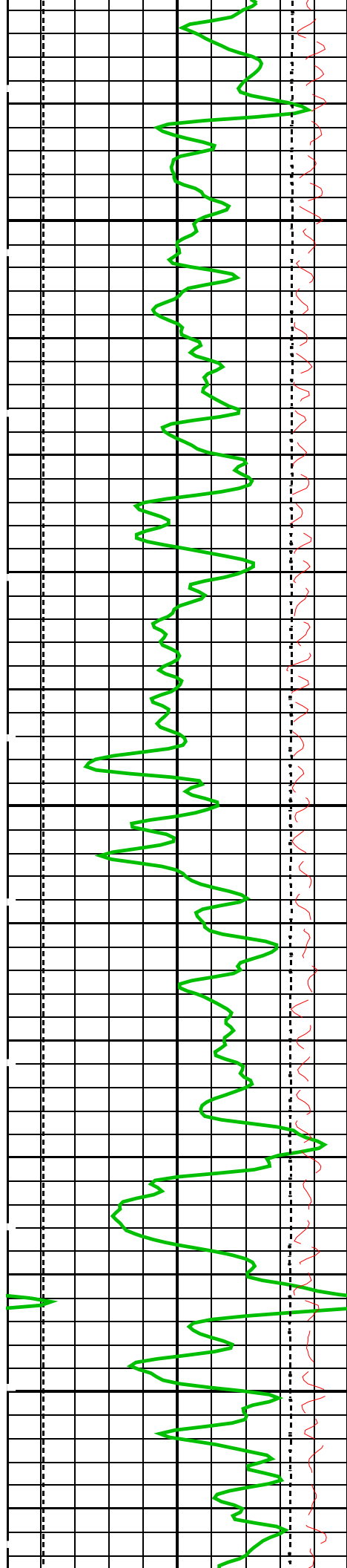


1325

1350

1375

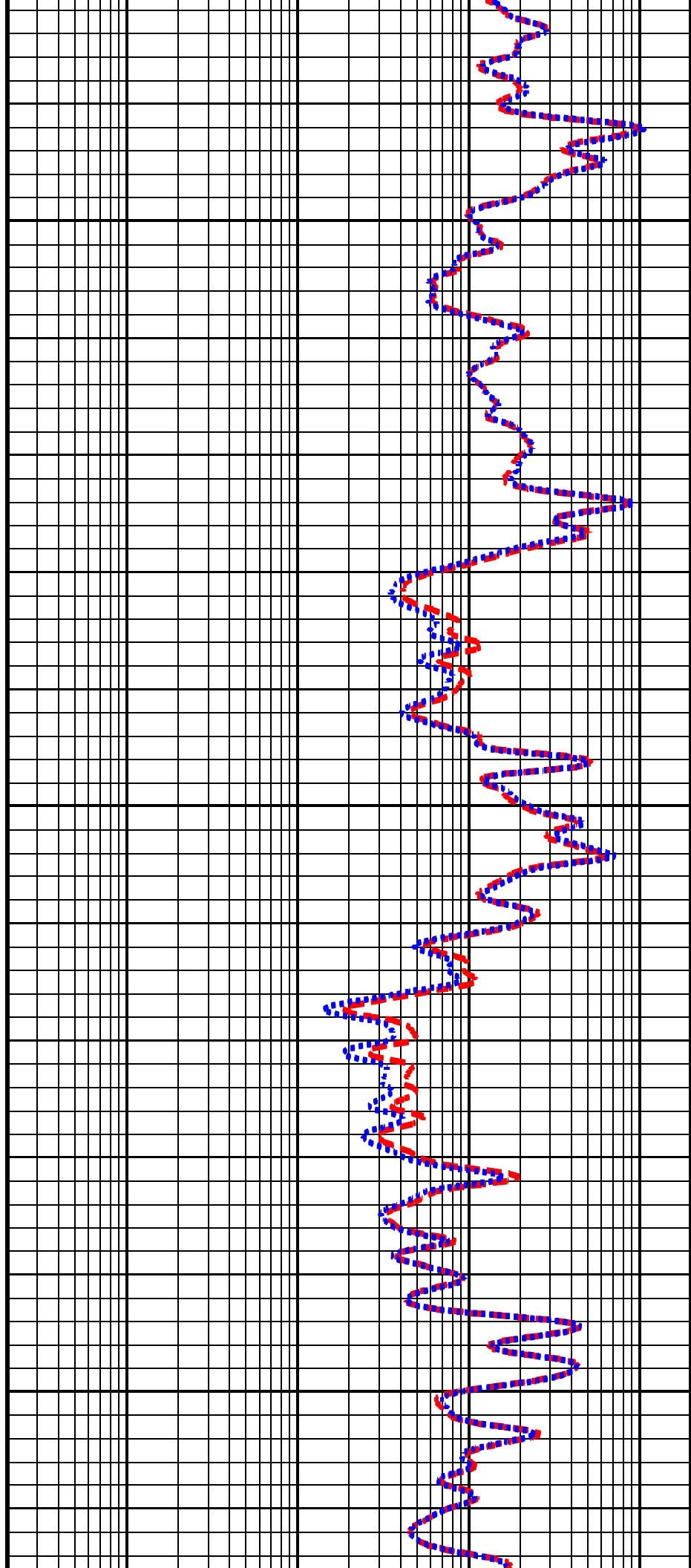


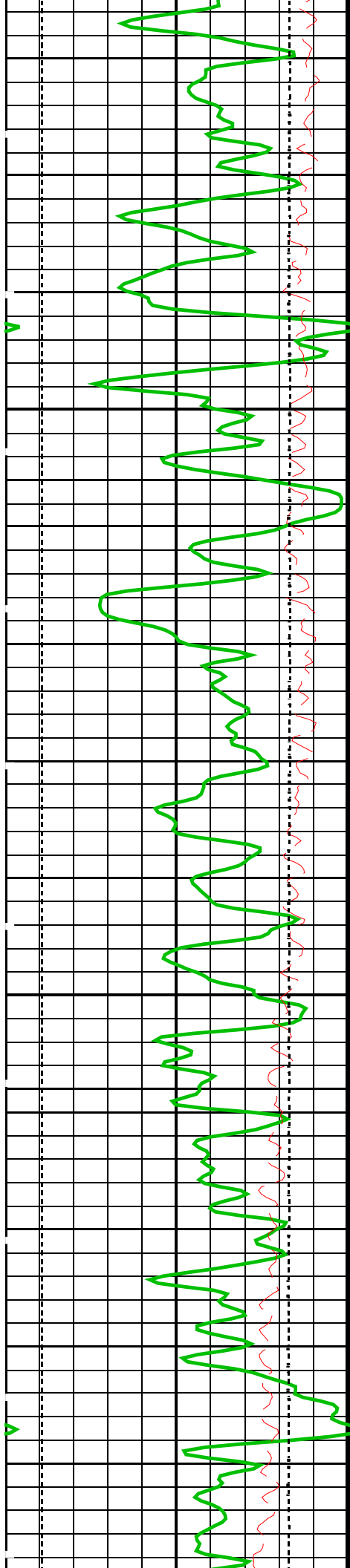


1400

1425

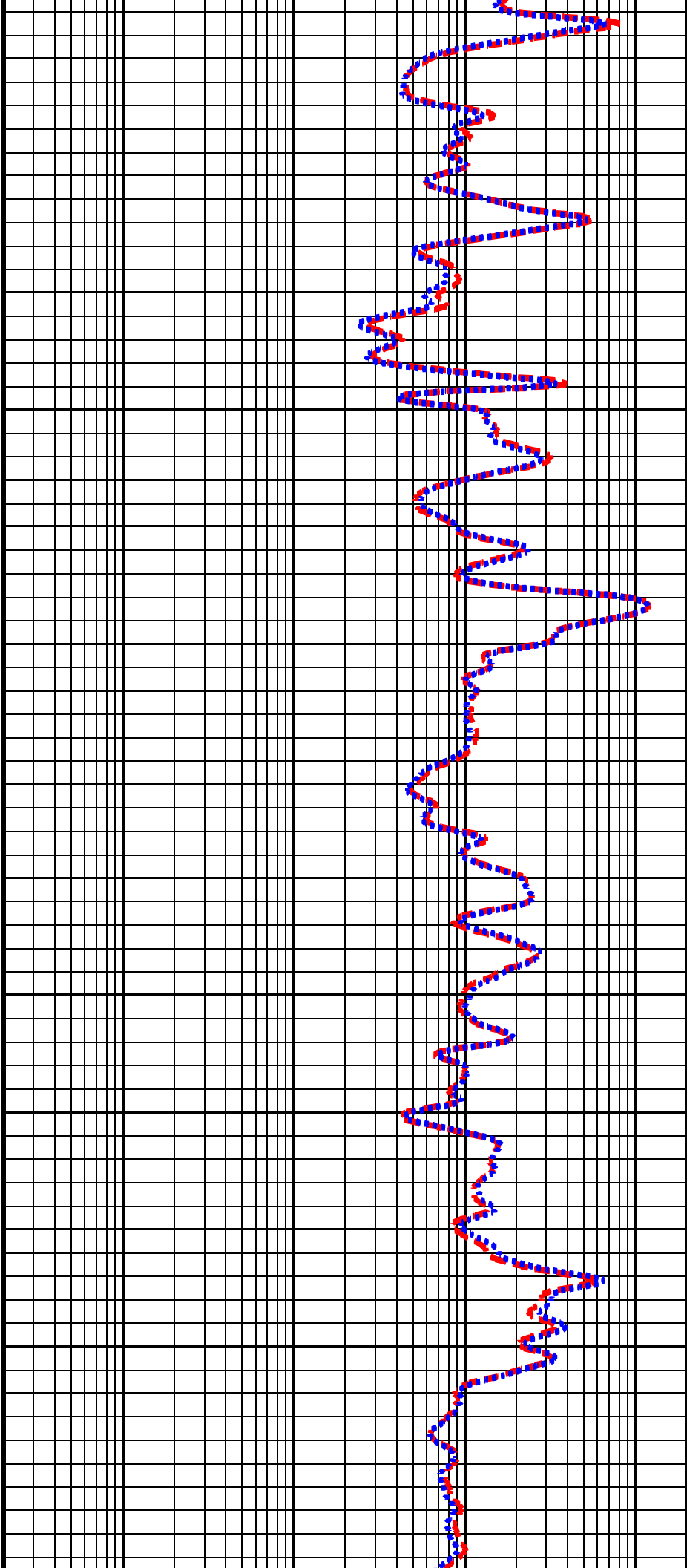
1450

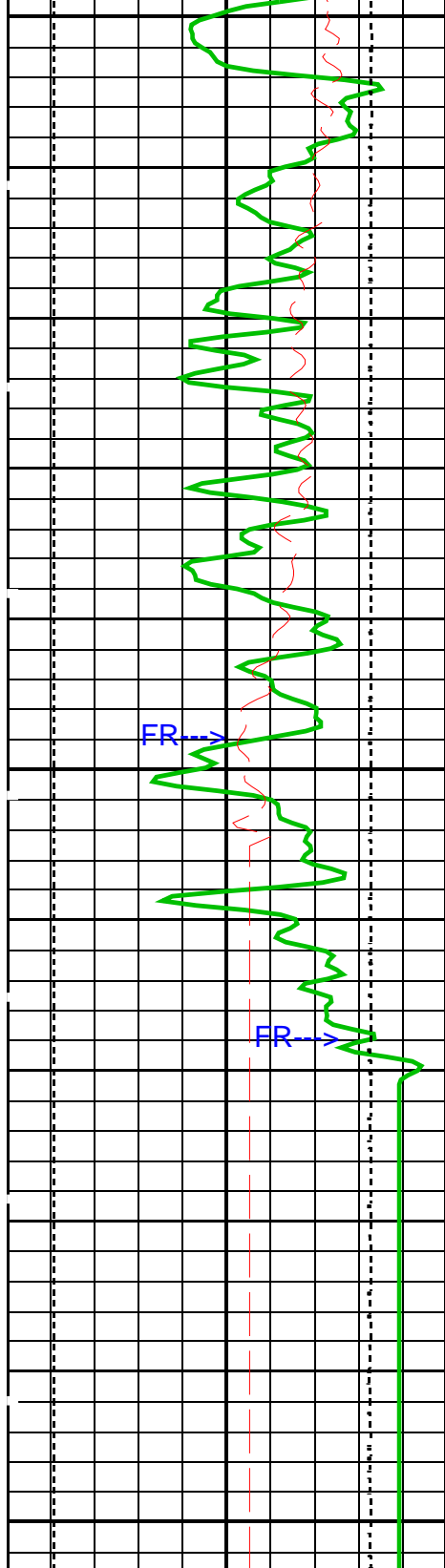




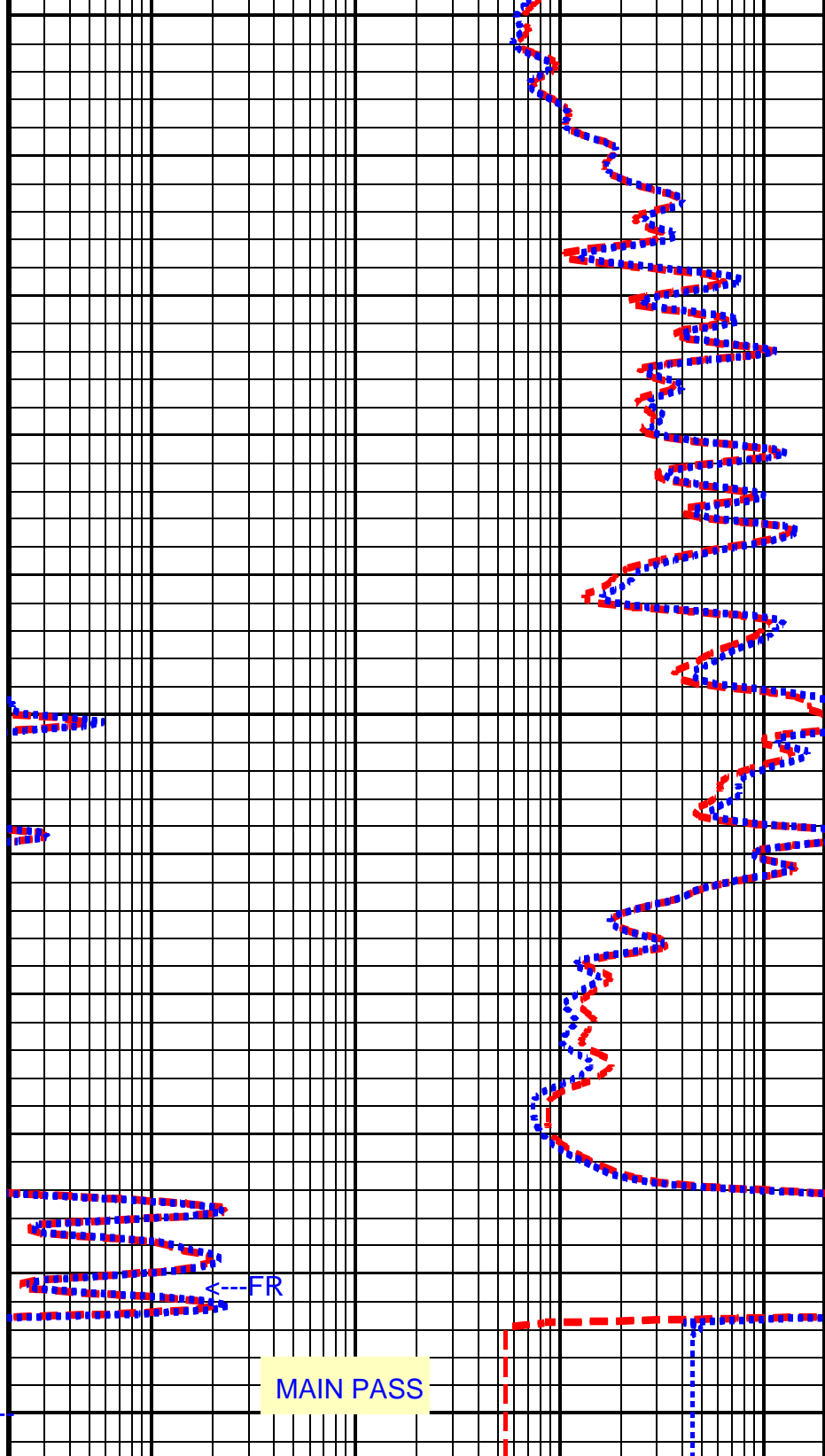
1475

1500





SP (SP)	
(MV)	
-80	20
Bit Size (BS)	
(MM)	
50	300
Gamma Ray (GR_STGC)	
(GAPI)	
0	150
Tension (TENS)	
20000 (N)	0



Laterolog Deep Resistivity (LLD)	
(OHMM)	
0.2	2000
Laterolog Shallow Resistivity (LLS)	
(OHMM)	
0.2	2000

PIP SUMMARY

Time Mark Every 60 S

Parameters

DLIS Name	Description	Value	
BS	Bit Size	75.770	MM
DO	Depth Offset	1.2	M
DORL	Depth Offset Repeat Analysis	1.2	M
DPRF	DEEP REFERENCE POWER	550	NW
KFAC	K FACTOR	SOND	
LLOO	LATEROLOG LOOP	OFF	
PLRM	POWER LOOP REFERENCE MODE	DEEP	
PP	Playback Processing	NORMAL	
SPNV	SP Next Value	-25	MV
SPRF	SHALLOW REFERENCE POWER	550	NW

Format: DLT_S5 Vertical Scale: 1:240 Graphics File Created: 18-Jan-2001 20:40

OP System Version: 9C0-413

MCM

MDLT-A
STGC-B

OP9-KP2
OP9-KP2

DTA-A
BSP

OP9-KP2
OP9-KP2

Input DLIS Files

DEFAULT	MDLT .011	FN:10 PRODUCER	18-Jan-2001 17:51	1575.4 M	866.9 M
---------	-----------	----------------	-------------------	----------	---------

Output DLIS Files

DEFAULT MDLT .014 FN:13 PRODUCER 18-Jan-2001 20:40

Input DLIS Files

DEFAULT	MDLT .011	FN:10 PRODUCER	18-Jan-2001 17:51	1575.4 M	866.9 M
DEFAULT	MDLT .009	FN:8 PRODUCER	18-Jan-2001 17:12	1574.6 M	1499.0 M

Output DLIS Files

DEFAULT MDLT .014 FN:13 PRODUCER 18-Jan-2001 20:40

OP System Version: 9C0-413

MCM

MDLT-A
STGC-B

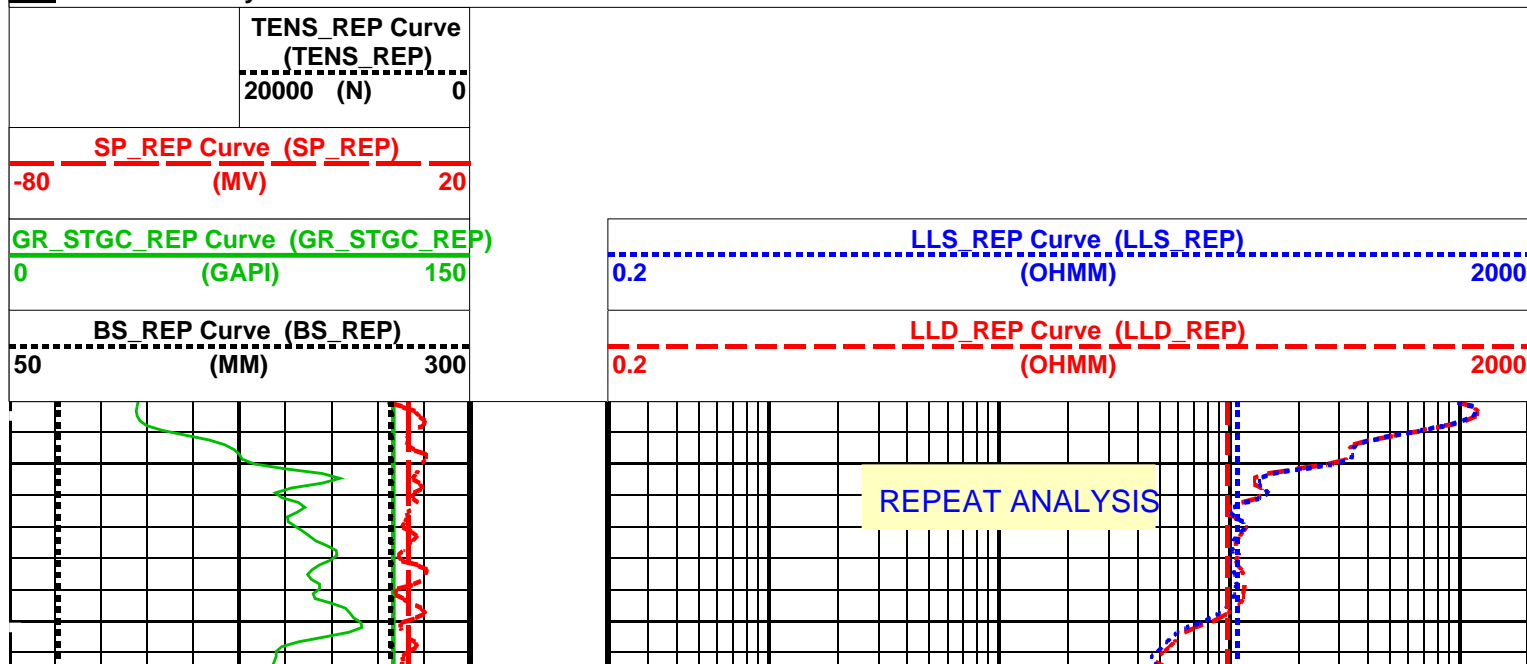
OP9-KP2
OP9-KP2

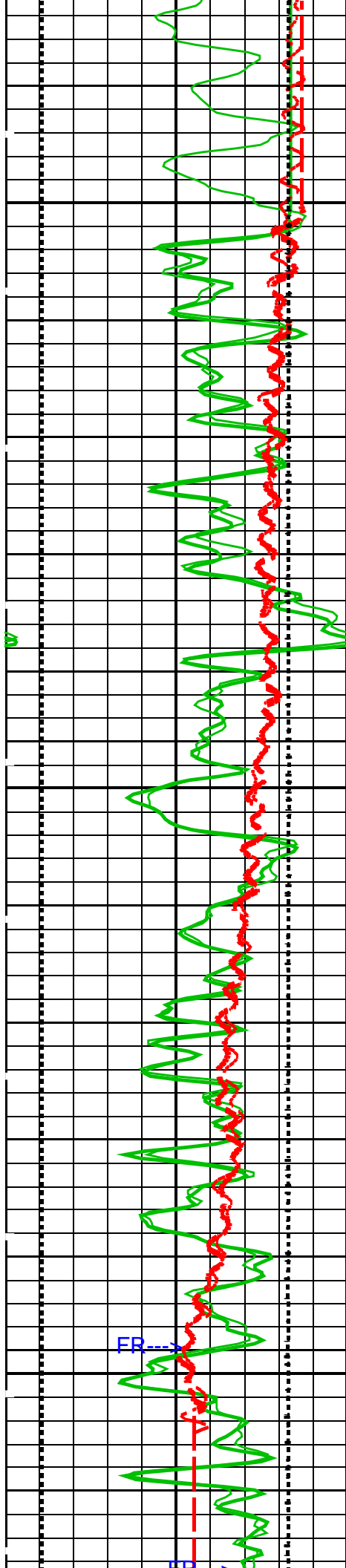
DTA-A
BSP

OP9-KP2
OP9-KP2

PIP SUMMARY

Time Mark Every 60 S



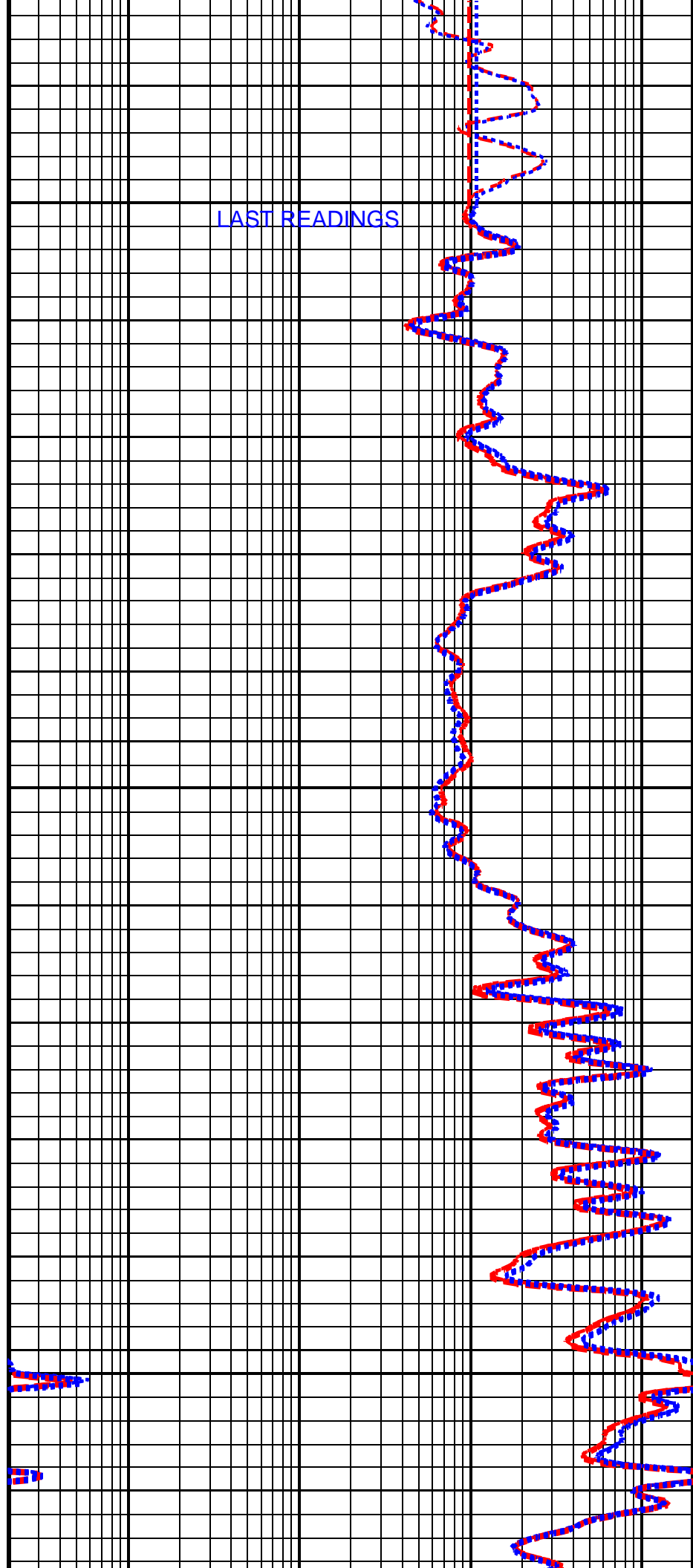


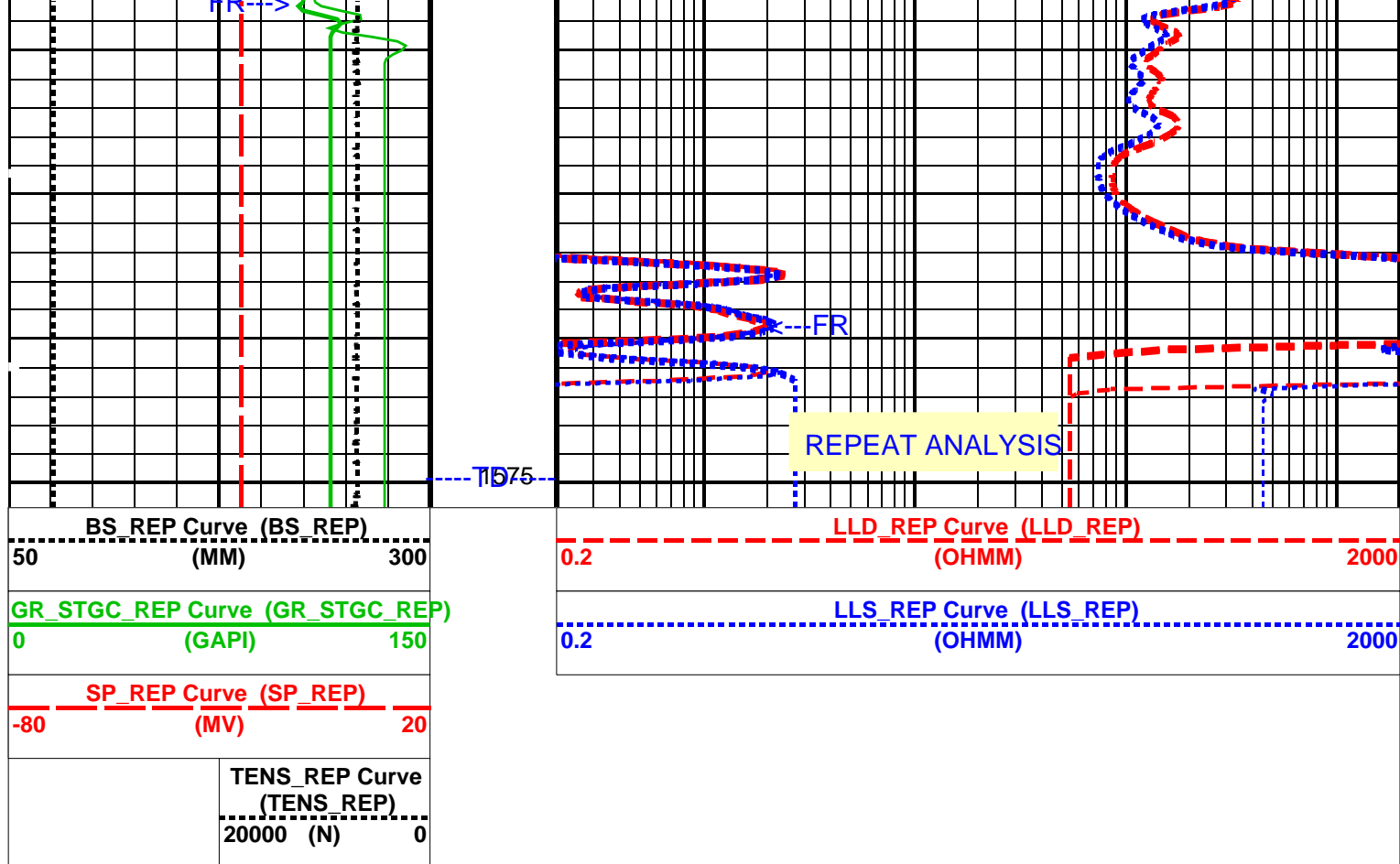
1500

1525

1550

LAST READINGS





PIP SUMMARY

Time Mark Every 60 S

Parameters

DLIS Name	Description	Value
BS	Bit Size	75.770 MM
DO	Depth Offset	1.2 M
DORL	Depth Offset Repeat Analysis	1.2 M
DPRF	DEEP REFERENCE POWER	550 NW
KFAC	K FACTOR	SOND
LLOO	LATEROLOG LOOP	OFF
PLRM	POWER LOOP REFERENCE MODE	DEEP
PP	Playback Processing	NORMAL
SPNV	SP Next Value	-25 MV
SPRF	SHALLOW REFERENCE POWER	550 NW

Format: DLT_REP Vertical Scale: 1:240

Graphics File Created: 18-Jan-2001 20:40

OP System Version: 9C0-413

MCM

MDLT-A	OP9-KP2	DTA-A	OP9-KP2
STGC-B	OP9-KP2	BSP	OP9-KP2

Input DLIS Files

DEFAULT	MDLT .011	FN:10 PRODUCER	18-Jan-2001 17:51	1575.4 M	866.9 M
DEFAULT	MDLT .009	FN:8 PRODUCER	18-Jan-2001 17:12	1574.6 M	1499.0 M

Output DLIS Files

DEFAULT	MDLT .014	FN:13 PRODUCER	18-Jan-2001 20:40
---------	-----------	----------------	-------------------

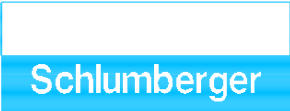
Measurement	Nominal	Master	Before	After	Change	Limit	Units
MEDIUM DUAL LATEROLOG - A Wellsite Calibration - DLT ELECTRONICS CALIBRATION Laterolog Measurement							
Before: 18-JAN-2001 16:40							
MEASURED LLD	31.62	N/A	31.52	N/A	N/A	0.9000	OHMM
MEASURED LLS	31.62	N/A	31.07	N/A	N/A	0.9000	OHMM
SLIM Telemetry Gamma-ray Cartridge - B Wellsite Calibration - Detector Calibration							
Before: 17-JAN-2001 16:44							
Gamma Ray (Jig - Bkg)	144.9	N/A	144.9	N/A	N/A	13.17	GAPI
Gamma Ray (Calibrated)	155.1	N/A	155.1	N/A	N/A	15.00	GAPI

MEDIUM DUAL LATEROLOG - A / Equipment Identification			
Primary Equipment:			
Auxiliary Equipment:			
Medium Dual Laterolog Electrode		MDLE -	710
Medium Dual Laterolog Sonde		MDLS - A	710
Medium Dual Laterolog Housing B		MDLH - B	
Medium Dual Laterolog Cartridge		MDLC - A	710
Adapter Head 189		AH - 189	
Medium Dual Laterolog Housing A		MDLH - A	
Medium Dual Laterolog Digital Interface		MDLI - A	710
Laterolog Control Module		LCM - AA	974

SLIM Telemetry Gamma-ray Cartridge - B / Equipment Identification			
Primary Equipment:			
STGC Gamma-ray & Accelerometer Cartridge		STGC - B	
STGC Telemetry Cartridge		STGC - A	
Auxiliary Equipment:			
SLIM Electronics Cartridge Housing		STGH - B	8007

SLIM Telemetry Gamma-ray Cartridge - B Wellsite Calibration											
Detector Calibration											
Phase	Gamma Ray Background GAPI		Value	Phase	Gamma Ray (Jig - Bkg) GAPI		Value	Phase	Gamma Ray (Calibrated) GAPI		Value
Before			8.447	Before			144.9	Before			155.1
	0	30.00	120.0		131.7	144.9	158.0		140.1	155.1	170.1
	(Minimum)	(Nominal)	(Maximum)		(Minimum)	(Nominal)	(Maximum)		(Minimum)	(Nominal)	(Maximum)
Before: 17-JAN-2001 16:44											

<div>COMPANY:</div> <div>WELL:</div> <div>FIELD:</div> <div>PROVINCE:</div>	<div>DEER LAKE OIL & GAS INC.</div> <div>DEER LAKE OIL & GAS ET AL WESTERN ADVENTURE N</div> <div>EXPLORATORY</div> <div>NEWFOUNDLAND</div>	BOTTOM LOG INTERVAL	1571 m
		SCHLUMBERGER DEPTH	1575 m
		DEPTH DRILLER	1584 m
		KELLY BUSHING	92.5 m
		DRILL FLOOR	92.5 m
		GROUND LEVEL	90 m



DUAL LATEROLOG